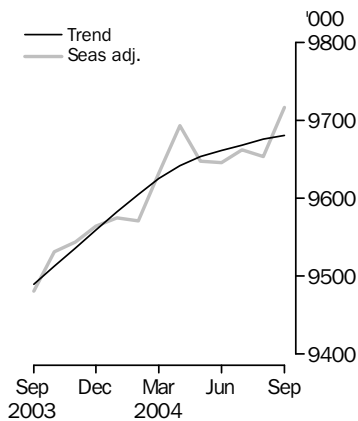


LABOUR FORCE

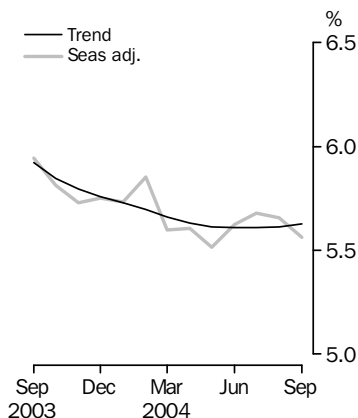
AUSTRALIA

EMBARGO: 11.30AM (CANBERRA TIME) THURS 7 OCT 2004

Employed Persons



Unemployment rate



KEY FIGURES

	Aug 2004	Sep 2004	Aug 04 to Sep 04	Sep 03 to Sep 04
Trend				
Employed persons ('000)	9 676.2	9 681.2	5.0	2.0 %
Unemployed persons ('000)	575.5	577.1	1.6	-3.4 %
Unemployment rate (%)	5.6	5.6	0.0 pts	-0.3 pts
Participation rate (%)	63.5	63.5	0.0 pts	0.1 pts
Seasonally Adjusted				
Employed persons ('000)	9 653.7	9 717.2	63.5	2.5 %
Unemployed persons ('000)	579.0	572.4	-6.5	-4.5 %
Unemployment rate (%)	5.7	5.6	-0.1 pts	-0.4 pts
Participation rate (%)	63.4	63.6	0.3 pts	0.3 pts

KEY POINTS

TREND ESTIMATES (MONTHLY CHANGE)

- EMPLOYMENT increased to 9,681,200
- UNEMPLOYMENT increased to 577,100
- UNEMPLOYMENT RATE remained at 5.6%
- PARTICIPATION RATE remained at 63.5%

SEASONALLY ADJUSTED ESTIMATES (MONTHLY CHANGE)

EMPLOYMENT

- increased by 63,500 to 9,717,200. Full-time employment increased by 19,100 to 6,960,700 and part-time employment increased by 44,400 to 2,756,500.

UNEMPLOYMENT

- decreased by 6,500 to 572,400. The number of persons looking for full-time work decreased by 4,400 to 402,400 and the number of persons looking for part-time work decreased by 2,100 to 170,000.

UNEMPLOYMENT RATE

- decreased by 0.1 percentage point to 5.6%. Both the male and female unemployment rates decreased by 0.1 percentage point, to 5.5% and 5.6% respectively.

PARTICIPATION RATE

- increased by 0.3 percentage points to 63.6%.

INQUIRIES

- For further information about these and related statistics, contact the National Information and Referral Service on 1300 135 070 or Michael Johnson on Canberra (02) 6252 6525.

NOTES

FORTHCOMING ISSUES

<i>ISSUE</i>	<i>RELEASE DATE</i>
October 2004	11 November 2004
November 2004	9 December 2004
December 2004	13 January 2005
January 2005	10 February 2005
February 2005	10 March 2005
March 2005	7 April 2005

IMPACT OF SURVEY RESPONSE RATES ON AUGUST ESTIMATES

The Labour Force Survey (LFS) usually achieves high levels of response from households selected for enumeration each month. Typically, the response rate for the LFS is around 97% nationally.

Operational difficulties during enumeration of the August 2004 survey resulted in a higher level of non-contact of households, and hence a lower than usual response rate – just over 94% nationally. Analysis conducted by the ABS subsequent to the publishing of August 2004 LFS results indicates that, due to this reduced response rate, the level of the Australian seasonally adjusted employment estimate for August may have been understated by between 15,000 and 25,000 persons. (As the standard error on the national employment estimate for August was 38,700 persons, an understatement of this size would be well within the bounds of expected sampling error.)

Any understatement in the estimated employment level for August would have affected the monthly movement in the seasonally adjusted estimate of employment between July and August as well as between August and September.

The reduction in response rates in August varied across the states and territories, but was most pronounced in NSW. Hence any understatement in August would have been greatest in NSW.

The response rate for the September LFS (close to 96% nationally) is still below the usual level. However, initial analysis of LFS data indicates that this reduced response rate has had no significant impact on the estimate of employment for September. The ABS will, however, continue to analyse data as response rates return to normal levels.

These changes to response rates have had no significant impact on the unemployment estimates.

Dennis Trewin
Australian Statistician

SAMPLING VARIABILITY

INTRODUCTION

Labour Force Survey (LFS) estimates are based on information obtained from a sample of the population, and are subject to sampling variability (or sampling error), i.e. they may be different from the figures that would have been obtained from an enumeration of the entire population. The expected magnitude of the sampling error depends on the sample design, the sample size and the population variability. One measure of the expected magnitude of the sampling error of an estimate is the standard error.

There is approximately a 95% chance that an estimate will differ from the true value by less than two standard errors. Hence an approximate 95% confidence interval is the region covering two standard errors either side of a survey estimate. The following table shows 95% confidence intervals for key LFS seasonally adjusted monthly movements between August and September.

MOVEMENTS IN SEASONALLY ADJUSTED SERIES BETWEEN AUGUST AND SEPTEMBER 2004

	MONTHLY CHANGE	95% CONFIDENCE INTERVAL		
Total Employment	63 500	26 300	to	100 700
Total Unemployment	-6 500	-20 100	to	7 100
Unemployment rate	-0.1 pts	-0.3 pts	to	0.1 pts
Participation rate	0.3 pts	0.1 pts	to	0.5 pts

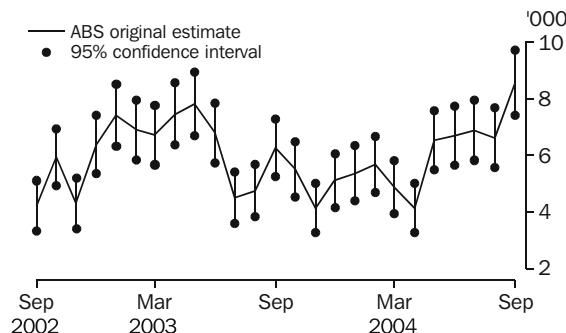
STATE AND TERRITORY ESTIMATES

The LFS is designed primarily to provide reliable estimates of the key labour force statistics for the whole of Australia and, secondarily, for each state and territory. The allocation of the sample across the states and territories is designed as a compromise between the accuracy of national estimates and state or territory estimates. The ABS routinely warns users that the estimates (especially for states and territories with smaller sample sizes) can have relatively high sampling variability.

Example

LFS estimates of employed and unemployed persons for the Northern Territory exhibit substantial sampling variability, reflecting the relatively small sample enumerated there. In the Northern Territory, approximately 580 selections (private dwelling and non-private dwelling households) are surveyed each month compared with New South Wales (for example) where the number surveyed is around 7500. The following graph shows the unemployed persons original series for the Northern Territory, together with approximate 95% confidence intervals for each month's level estimate.

NT UNEMPLOYED PERSONS, Original Series



SAMPLE ROTATION

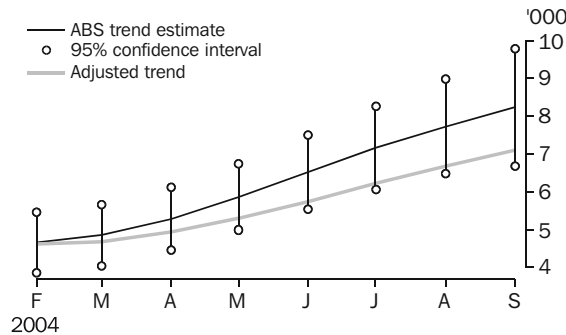
The LFS sample design provides for the replacement each month of around one-eighth of the sample. This rotation is generally to neighbouring households. Usually people in the new households have similar labour force characteristics to those of the people they are replacing, but occasionally the rotation is to a set of households with very different characteristics – this is a normal part of the random selection process, and can happen at any time. It contributes to the sampling variability of all LFS estimates, as reflected in the standard errors on pages 27 and 28 of this publication. However, especially when sample sizes are relatively small, the resultant changes in the estimates are not necessarily representative of real world changes.

Example

An example of the impact of sample rotation on sampling variability occurred in the Northern Territory between April and May 2004. In one particular area of the Northern Territory, the sample was rotated to a group of households with a much higher number of unemployed persons than is usually found in Northern Territory households.

The following graph shows the Northern Territory trend estimate of the number of unemployed persons as published, together with a trend estimate of unemployed persons as it would look if the persons in these households had the average characteristics of persons in the remaining sampled households. The vertical bars on each time point of the graph show a very approximate estimate of the 95% confidence interval around each point of the published trend series. The graph indicates the sensitivity of the trend estimate to some rotations of the sample.

NT UNEMPLOYED PERSONS, Trend Series



ENHANCEMENTS TO THE LFS

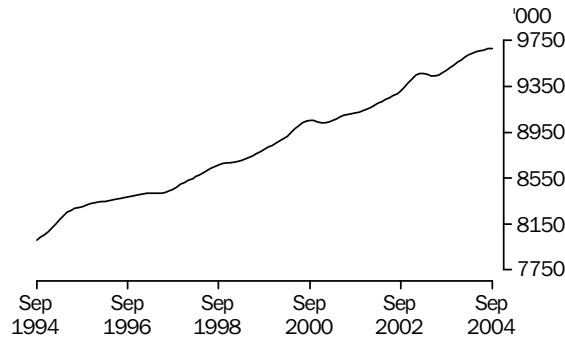
The ABS has introduced some changes to the LFS over the last year that have helped to reduce monthly volatility, such as the use of concurrent seasonal adjustment and regional population benchmarks.

The ABS is also looking at further reducing volatility in LFS estimates by using improved estimation techniques to adjust for households with unusual characteristics. This is expected to lead to more robust estimates for states and territories with smaller samples (such as the Northern Territory). It is hoped that these changes can be implemented by mid 2005.

PRINCIPAL LABOUR FORCE SERIES TREND ESTIMATES

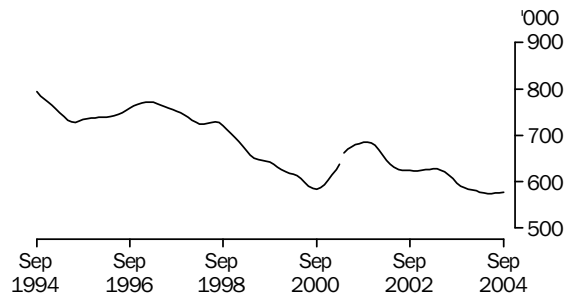
EMPLOYED PERSONS

The trend estimate of employed persons generally rose from a low of 7,637,500 in December 1992 to 9,054,900 in September 2000. The trend then fell slightly to 9,033,700 in January 2001, before rising to 9,464,200 in March 2003. The trend then fell for three months before rising to stand at 9,681,200 in September 2004.



UNEMPLOYED PERSONS

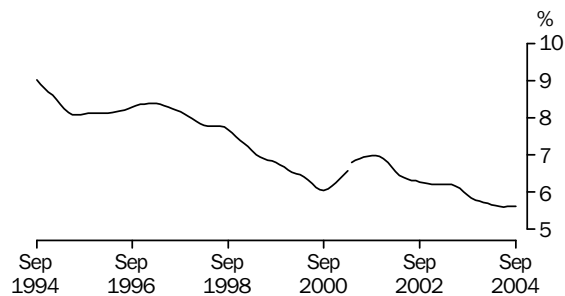
The trend estimate of unemployed persons fell rapidly from 920,700 in September 1993 to 728,100 in July 1995. The trend then rose to 771,700 in February 1997, before falling to 583,500 in September 2000. After rising to 685,200 in October 2001, the trend has generally fallen to stand at 577,100 in September 2004.



Series break at April 2001; see paragraph 13 of Explanatory Notes.

UNEMPLOYMENT RATE

The trend unemployment rate fell rapidly from 10.7% in August 1993 to 8.1% in July 1995. The trend then rose slowly, reaching 8.4% in February 1997, before falling to 6.1% in September 2000. After rising to 7.0% in October 2001, the trend has since generally fallen to stand at 5.6% in September 2004.



Series break at April 2001; see paragraph 13 of Explanatory Notes.

LABOUR FORCE STATUS (AGED 15 & OVER): Trend

	EMPLOYED			UNEMPLOYED			UNEMPLOYMENT RATE		
	<i>Full time</i>	<i>Part time</i>	<i>Total</i>	<i>Looking for f/t work</i>	<i>Total</i>	<i>Labour force</i>	<i>Looking for f/t work</i>	<i>Total</i>	<i>Participation rate</i>
	'000	'000	'000	'000	'000	'000	%	%	%
MALES									
September 2001	4 345.6	723.6	5 069.2	329.5	394.2	5 463.4	7.0	7.2	72.1
September 2002	4 395.0	769.8	5 164.8	284.6	349.3	5 514.0	6.1	6.3	71.7
2003									
September	4 491.7	772.3	5 264.0	264.4	321.0	5 585.1	5.6	5.7	71.4
October	4 504.7	778.6	5 283.3	259.1	314.8	5 598.1	5.4	5.6	71.5
November	4 516.6	784.2	5 300.8	255.4	311.4	5 612.2	5.4	5.5	71.6
December	4 528.4	787.9	5 316.3	253.6	310.4	5 626.7	5.3	5.5	71.7
2004									
January	4 539.8	789.6	5 329.4	253.7	311.1	5 640.5	5.3	5.5	71.8
February	4 551.2	789.5	5 340.7	254.8	312.3	5 653.0	5.3	5.5	71.8
March	4 561.3	787.7	5 349.0	256.0	313.3	5 662.2	5.3	5.5	71.8
April	4 568.2	785.5	5 353.6	256.3	313.6	5 667.2	5.3	5.5	71.8
May	4 571.4	784.3	5 355.7	255.4	313.2	5 668.9	5.3	5.5	71.7
June	4 572.0	784.6	5 356.7	253.8	312.6	5 669.3	5.3	5.5	71.6
July	4 571.6	785.9	5 357.5	252.0	312.5	5 670.0	5.2	5.5	71.6
August	4 571.1	787.9	5 358.9	250.3	312.5	5 671.5	5.2	5.5	71.5
September	4 569.4	790.6	5 360.0	249.0	313.0	5 673.1	5.2	5.5	71.4
FEMALES									
September 2001	2 231.2	1 816.0	4 047.2	187.7	290.2	4 337.4	7.8	6.7	55.2
September 2002	2 260.2	1 885.4	4 145.6	171.6	274.6	4 420.2	7.1	6.2	55.5
2003									
September	2 290.6	1 935.4	4 226.0	176.7	276.4	4 502.4	7.2	6.1	55.6
October	2 297.8	1 931.7	4 229.5	175.1	275.9	4 505.4	7.1	6.1	55.6
November	2 305.3	1 929.9	4 235.2	173.6	275.1	4 510.2	7.0	6.1	55.6
December	2 311.5	1 931.9	4 243.3	172.4	273.8	4 517.1	6.9	6.1	55.6
2004									
January	2 316.5	1 937.0	4 253.4	170.8	271.2	4 524.7	6.9	6.0	55.6
February	2 321.6	1 943.4	4 265.0	168.9	267.8	4 532.8	6.8	5.9	55.6
March	2 327.6	1 949.5	4 277.1	167.4	264.3	4 541.5	6.7	5.8	55.7
April	2 335.4	1 953.0	4 288.4	166.1	261.9	4 550.3	6.6	5.8	55.7
May	2 344.9	1 952.9	4 297.8	164.9	261.0	4 558.7	6.6	5.7	55.7
June	2 355.2	1 949.7	4 304.9	163.8	261.4	4 566.3	6.5	5.7	55.8
July	2 365.1	1 945.9	4 311.0	162.6	262.3	4 573.3	6.4	5.7	55.8
August	2 374.3	1 942.9	4 317.3	161.1	263.0	4 580.2	6.4	5.7	55.8
September	2 381.3	1 939.8	4 321.2	159.8	264.1	4 585.2	6.3	5.8	55.8
PERSONS									
September 2001	6 576.9	2 539.6	9 116.5	517.2	684.3	9 800.8	7.3	7.0	63.5
September 2002	6 655.1	2 655.3	9 310.4	456.1	623.8	9 934.2	6.4	6.3	63.4
2003									
September	6 782.3	2 707.7	9 490.0	441.2	597.4	10 087.4	6.1	5.9	63.4
October	6 802.5	2 710.3	9 512.8	434.2	590.7	10 103.5	6.0	5.8	63.4
November	6 821.9	2 714.1	9 536.0	429.0	586.4	10 122.4	5.9	5.8	63.4
December	6 839.8	2 719.8	9 559.7	426.0	584.1	10 143.8	5.9	5.8	63.5
2004									
January	6 856.3	2 726.5	9 582.8	424.4	582.4	10 165.2	5.8	5.7	63.5
February	6 872.8	2 732.9	9 605.7	423.7	580.2	10 185.9	5.8	5.7	63.6
March	6 888.9	2 737.2	9 626.1	423.3	577.6	10 203.7	5.8	5.7	63.6
April	6 903.6	2 738.4	9 642.0	422.4	575.5	10 217.5	5.8	5.6	63.6
May	6 916.3	2 737.1	9 653.5	420.3	574.1	10 227.6	5.7	5.6	63.6
June	6 927.2	2 734.4	9 661.5	417.6	574.0	10 235.6	5.7	5.6	63.6
July	6 936.7	2 731.9	9 668.5	414.6	574.8	10 243.3	5.6	5.6	63.5
August	6 945.4	2 730.8	9 676.2	411.4	575.5	10 251.7	5.6	5.6	63.5
September	6 950.8	2 730.4	9 681.2	408.8	577.1	10 258.3	5.6	5.6	63.5

LABOUR FORCE STATUS (AGED 15 & OVER): **Seasonally Adjusted**

	EMPLOYED			UNEMPLOYED			UNEMPLOYMENT RATE			Participation rate
	Full time	Part time	Total	Looking for f/t work	Total	Labour force	Looking for f/t work	Total		
	'000	'000	'000	'000	'000	'000	%	%	%	
MALES										
September 2001	4 354.7	716.8	5 071.5	329.0	392.4	5 463.9	7.0	7.2	72.1	
September 2002	4 398.3	763.9	5 162.2	287.8	353.2	5 515.5	6.1	6.4	71.7	
2003										
September	4 493.2	771.0	5 264.2	263.4	318.7	5 582.9	5.5	5.7	71.4	
October	4 509.2	777.8	5 287.0	264.4	320.6	5 607.6	5.5	5.7	71.6	
November	4 519.6	781.0	5 300.6	247.4	303.2	5 603.8	5.2	5.4	71.5	
December	4 522.2	798.9	5 321.1	250.9	307.2	5 628.3	5.3	5.5	71.7	
2004										
January	4 539.5	791.6	5 331.1	254.7	312.0	5 643.2	5.3	5.5	71.8	
February	4 540.1	789.8	5 329.9	259.5	320.3	5 650.2	5.4	5.7	71.8	
March	4 564.9	779.4	5 344.3	254.4	310.9	5 655.1	5.3	5.5	71.7	
April	4 590.4	784.2	5 374.7	256.1	315.3	5 690.0	5.3	5.5	72.1	
May	4 563.6	790.4	5 354.0	257.1	308.7	5 662.7	5.3	5.5	71.7	
June	4 567.4	785.7	5 353.1	255.0	316.0	5 669.1	5.3	5.6	71.7	
July	4 576.1	784.6	5 360.7	252.3	310.2	5 670.9	5.2	5.5	71.6	
August	4 562.8	769.9	5 332.7	247.1	313.6	5 646.4	5.1	5.6	71.1	
September	4 573.8	809.5	5 383.3	248.8	313.3	5 696.6	5.2	5.5	71.7	
FEMALES										
September 2001	2 248.5	1 788.9	4 037.5	183.8	283.7	4 321.2	7.6	6.6	55.0	
September 2002	2 257.3	1 876.4	4 133.7	172.9	283.1	4 416.7	7.1	6.4	55.4	
2003										
September	2 292.6	1 924.6	4 217.2	183.3	280.6	4 497.8	7.4	6.2	55.6	
October	2 299.3	1 945.0	4 244.4	168.8	267.7	4 512.0	6.8	5.9	55.7	
November	2 307.5	1 935.7	4 243.1	174.1	277.0	4 520.1	7.0	6.1	55.7	
December	2 315.3	1 927.8	4 243.1	173.5	276.6	4 519.7	7.0	6.1	55.6	
2004										
January	2 323.4	1 920.5	4 243.9	169.8	270.3	4 514.2	6.8	6.0	55.5	
February	2 307.9	1 933.3	4 241.2	172.7	274.8	4 516.0	7.0	6.1	55.4	
March	2 323.6	1 964.5	4 288.2	165.0	260.4	4 548.5	6.6	5.7	55.7	
April	2 349.6	1 969.2	4 318.9	167.7	260.5	4 579.4	6.7	5.7	56.1	
May	2 330.6	1 963.0	4 293.6	160.0	254.5	4 548.2	6.4	5.6	55.6	
June	2 366.0	1 926.8	4 292.7	160.0	258.8	4 551.5	6.3	5.7	55.6	
July	2 356.3	1 945.3	4 301.6	174.7	271.6	4 573.3	6.9	5.9	55.8	
August	2 378.7	1 942.3	4 321.0	159.7	265.3	4 586.3	6.3	5.8	55.9	
September	2 386.9	1 947.1	4 334.0	153.5	259.1	4 593.1	6.0	5.6	55.9	
PERSONS										
September 2001	6 603.2	2 505.7	9 108.9	512.7	676.1	9 785.1	7.2	6.9	63.4	
September 2002	6 655.6	2 640.3	9 295.9	460.7	636.3	9 932.2	6.5	6.4	63.4	
2003										
September	6 785.8	2 695.6	9 481.4	446.7	599.4	10 080.7	6.2	5.9	63.4	
October	6 808.5	2 722.8	9 531.3	433.2	588.3	10 119.6	6.0	5.8	63.5	
November	6 827.1	2 716.7	9 543.8	421.5	580.2	10 123.9	5.8	5.7	63.4	
December	6 837.5	2 726.8	9 564.3	424.4	583.8	10 148.1	5.8	5.8	63.5	
2004										
January	6 862.9	2 712.1	9 575.0	424.5	582.3	10 157.4	5.8	5.7	63.5	
February	6 848.0	2 723.1	9 571.1	432.2	595.1	10 166.2	5.9	5.9	63.5	
March	6 888.6	2 743.9	9 632.4	419.4	571.2	10 203.6	5.7	5.6	63.6	
April	6 940.1	2 753.4	9 693.5	423.9	575.8	10 269.4	5.8	5.6	63.9	
May	6 894.2	2 753.4	9 647.6	417.1	563.2	10 210.9	5.7	5.5	63.5	
June	6 933.3	2 712.5	9 645.8	414.9	574.8	10 220.7	5.6	5.6	63.5	
July	6 932.4	2 729.9	9 662.3	426.9	581.8	10 244.1	5.8	5.7	63.5	
August	6 941.5	2 712.2	9 653.7	406.8	579.0	10 232.7	5.5	5.7	63.4	
September	6 960.7	2 756.5	9 717.2	402.4	572.4	10 289.7	5.5	5.6	63.6	

LABOUR FORCE STATUS (AGED 15 & OVER): Original

	EMPLOYED			UNEMPLOYED			UNEMPLOYMENT RATE			Participation rate	
	Full time	Part time	Total	Looking for f/t work	Total	Labour force	Not in labour force	Civilian population aged 15 and over	Looking for f/t work		Total
	'000	'000	'000	'000	'000	'000	'000	'000	%		%
MALES											
September 2001	4 379.4	716.5	5 095.9	329.0	397.0	5 493.0	2 080.0	7 573.0	7.0	7.2	72.5
September 2002	4 425.6	761.2	5 186.8	287.3	357.4	5 544.2	2 149.5	7 693.7	6.1	6.4	72.1
2003											
September	4 522.0	766.8	5 288.8	262.2	321.0	5 609.9	2 206.9	7 816.8	5.5	5.7	71.8
October	4 513.5	790.2	5 303.6	253.9	304.3	5 608.0	2 220.0	7 828.0	5.3	5.4	71.6
November	4 512.0	771.2	5 283.2	235.6	284.1	5 567.3	2 271.9	7 839.2	5.0	5.1	71.0
December	4 605.2	788.1	5 393.2	248.0	306.7	5 699.9	2 150.5	7 850.4	5.1	5.4	72.6
2004											
January	4 546.5	750.2	5 296.7	282.7	343.5	5 640.2	2 220.6	7 860.8	5.9	6.1	71.8
February	4 562.9	760.7	5 323.6	286.5	353.1	5 676.7	2 194.7	7 871.4	5.9	6.2	72.1
March	4 558.2	783.0	5 341.1	256.8	319.5	5 660.6	2 221.1	7 881.8	5.3	5.6	71.8
April	4 543.7	798.9	5 342.6	257.0	320.6	5 663.3	2 228.2	7 891.5	5.4	5.7	71.8
May	4 544.2	801.7	5 345.9	255.5	308.8	5 654.6	2 246.7	7 901.3	5.3	5.5	71.6
June	4 533.0	817.3	5 350.2	252.5	309.6	5 659.8	2 251.2	7 911.0	5.3	5.5	71.5
July	4 571.6	795.3	5 366.9	236.7	287.3	5 654.3	2 269.3	7 923.6	4.9	5.1	71.4
August	4 507.5	780.7	5 288.2	235.2	298.6	5 586.7	2 349.6	7 936.3	5.0	5.3	70.4
September	4 603.8	804.0	5 407.8	247.6	315.8	5 723.6	2 225.3	7 948.9	5.1	5.5	72.0
FEMALES											
September 2001	2 281.5	1 815.8	4 097.3	180.3	281.3	4 378.6	3 481.5	7 860.1	7.3	6.4	55.7
September 2002	2 296.0	1 898.2	4 194.2	169.3	279.0	4 473.3	3 496.5	7 969.8	6.9	6.2	56.1
2003											
September	2 334.7	1 942.8	4 277.5	179.1	275.2	4 552.8	3 541.2	8 093.9	7.1	6.0	56.2
October	2 296.2	1 952.3	4 248.5	159.1	253.8	4 502.3	3 603.2	8 105.5	6.5	5.6	55.5
November	2 307.6	1 943.9	4 251.5	165.3	256.1	4 507.6	3 609.4	8 117.0	6.7	5.7	55.5
December	2 368.4	1 921.2	4 289.6	178.5	279.5	4 569.1	3 559.5	8 128.6	7.0	6.1	56.2
2004											
January	2 348.2	1 813.3	4 161.5	186.1	286.8	4 448.3	3 690.7	8 139.0	7.3	6.4	54.7
February	2 321.6	1 894.8	4 216.4	196.3	316.5	4 532.9	3 616.7	8 149.6	7.8	7.0	55.6
March	2 318.0	1 967.7	4 285.7	171.9	282.0	4 567.6	3 592.4	8 160.0	6.9	6.2	56.0
April	2 307.6	1 971.3	4 278.9	166.6	262.7	4 541.7	3 627.7	8 169.4	6.7	5.8	55.6
May	2 310.1	1 984.8	4 294.9	159.1	254.9	4 549.7	3 629.0	8 178.7	6.4	5.6	55.6
June	2 326.3	1 978.0	4 304.3	158.1	252.1	4 556.5	3 631.5	8 188.0	6.4	5.5	55.6
July	2 362.6	1 940.8	4 303.4	161.4	247.4	4 550.8	3 649.0	8 199.8	6.4	5.4	55.5
August	2 335.2	1 954.6	4 289.8	148.9	251.5	4 541.3	3 670.4	8 211.7	6.0	5.5	55.3
September	2 431.6	1 963.5	4 395.1	149.8	253.8	4 648.9	3 574.7	8 223.6	5.8	5.5	56.5
PERSONS											
September 2001	6 660.8	2 532.3	9 193.2	509.2	678.4	9 871.5	5 561.5	15 433.1	7.1	6.9	64.0
September 2002	6 721.6	2 659.4	9 381.0	456.6	636.4	10 017.5	5 646.0	15 663.5	6.4	6.4	64.0
2003											
September	6 856.7	2 709.6	9 566.3	441.3	596.3	10 162.6	5 748.1	15 910.7	6.0	5.9	63.9
October	6 809.7	2 742.5	9 552.2	412.9	558.1	10 110.3	5 823.2	15 933.5	5.7	5.5	63.5
November	6 819.6	2 715.1	9 534.8	400.9	540.2	10 074.9	5 881.3	15 956.2	5.6	5.4	63.1
December	6 973.5	2 709.3	9 682.8	426.5	586.2	10 269.0	5 710.0	15 978.9	5.8	5.7	64.3
2004											
January	6 894.7	2 563.5	9 458.2	468.9	630.3	10 088.5	5 911.4	15 999.8	6.4	6.2	63.1
February	6 884.5	2 655.5	9 540.0	482.9	669.6	10 209.6	5 811.4	16 020.9	6.6	6.6	63.7
March	6 876.1	2 750.7	9 626.8	428.7	601.5	10 228.3	5 813.6	16 041.8	5.9	5.9	63.8
April	6 851.4	2 770.2	9 621.6	423.6	583.4	10 204.9	5 855.9	16 060.8	5.8	5.7	63.5
May	6 854.2	2 786.5	9 640.7	414.6	563.6	10 204.3	5 875.7	16 080.0	5.7	5.5	63.5
June	6 859.3	2 795.3	9 654.6	410.7	561.7	10 216.3	5 882.7	16 099.0	5.6	5.5	63.5
July	6 934.2	2 736.2	9 670.4	398.0	534.7	10 205.1	5 918.3	16 123.4	5.4	5.2	63.3
August	6 842.7	2 735.3	9 578.0	384.1	550.1	10 128.1	6 020.0	16 148.0	5.3	5.4	62.7
September	7 035.4	2 767.5	9 802.9	397.3	569.6	10 372.5	5 800.0	16 172.4	5.3	5.5	64.1

LABOUR FORCE STATUS (AGED 15 & OVER)—New South Wales

	TREND					SEASONALLY ADJUSTED					Civilian population aged 15 and over
	Employed full time	Total employed	Total unemployed	Unemployment rate	Participation rate	Employed full time	Total employed	Total unemployed	Unemployment rate	Participation rate	
	'000	'000	'000	%	%	'000	'000	'000	%	%	
MALES											
September 2001	1 473.2	1 709.9	117.0	6.4	71.1	1 475.5	1 711.7	118.6	6.5	71.2	2 570.4
September 2002	1 487.2	1 734.6	109.8	6.0	70.8	1 488.7	1 733.4	113.5	6.1	70.9	2 603.4
2003											
September	1 509.9	1 752.3	103.2	5.6	70.5	1 508.6	1 749.4	101.2	5.5	70.3	2 632.0
October	1 515.0	1 760.8	99.7	5.4	70.6	1 516.5	1 767.7	100.9	5.4	70.9	2 634.6
November	1 518.4	1 768.1	97.8	5.2	70.8	1 525.5	1 770.1	95.6	5.1	70.7	2 637.3
December	1 520.3	1 773.3	97.2	5.2	70.9	1 513.5	1 771.1	95.9	5.1	70.7	2 639.9
2004											
January	1 521.2	1 776.0	97.6	5.2	70.9	1 522.5	1 779.3	97.2	5.2	71.0	2 642.3
February	1 521.7	1 777.5	98.2	5.2	70.9	1 515.4	1 772.8	101.7	5.4	70.9	2 644.8
March	1 521.3	1 777.7	98.6	5.3	70.9	1 525.3	1 779.3	98.4	5.2	70.9	2 647.1
April	1 519.5	1 776.2	98.6	5.3	70.8	1 525.6	1 776.9	98.5	5.3	70.8	2 649.1
May	1 516.8	1 773.7	98.3	5.3	70.6	1 515.4	1 772.3	98.2	5.3	70.6	2 651.1
June	1 513.5	1 770.7	98.1	5.2	70.4	1 514.3	1 778.7	97.6	5.2	70.7	2 653.1
July	1 510.6	1 768.1	98.1	5.3	70.2	1 507.6	1 769.7	96.6	5.2	70.3	2 656.5
August	1 508.4	1 766.1	98.2	5.3	70.1	1 499.5	1 742.1	99.2	5.4	69.2	2 659.8
September	1 506.6	1 764.6	98.6	5.3	70.0	1 516.1	1 781.2	99.6	5.3	70.6	2 663.2
FEMALES											
September 2001	775.4	1 344.8	91.5	6.4	53.9	781.1	1 342.0	88.6	6.2	53.7	2 662.4
September 2002	775.5	1 365.7	86.3	5.9	53.9	774.4	1 354.3	88.0	6.1	53.6	2 691.2
2003											
September	785.9	1 396.9	88.8	6.0	54.6	784.1	1 396.8	89.3	6.0	54.6	2 720.1
October	789.6	1 397.1	88.3	5.9	54.5	789.2	1 398.5	87.9	5.9	54.6	2 722.8
November	794.0	1 398.6	86.8	5.8	54.5	795.1	1 404.0	88.4	5.9	54.8	2 725.6
December	798.0	1 401.8	85.2	5.7	54.5	795.9	1 398.0	85.1	5.7	54.4	2 728.3
2004											
January	800.3	1 406.2	83.8	5.6	54.6	805.8	1 401.0	86.2	5.8	54.5	2 730.9
February	800.3	1 410.8	83.1	5.6	54.7	799.5	1 405.0	79.3	5.3	54.3	2 733.5
March	798.5	1 414.5	83.7	5.6	54.8	801.1	1 420.4	80.1	5.3	54.8	2 736.1
April	796.4	1 416.2	85.3	5.7	54.8	800.4	1 429.0	86.4	5.7	55.3	2 738.1
May	795.6	1 415.8	86.8	5.8	54.8	786.0	1 415.1	88.8	5.9	54.9	2 740.1
June	796.7	1 414.0	87.4	5.8	54.7	794.8	1 407.6	86.6	5.8	54.5	2 742.1
July	799.6	1 412.2	86.9	5.8	54.6	796.5	1 408.9	92.1	6.1	54.7	2 745.2
August	803.4	1 411.0	85.6	5.7	54.5	805.3	1 407.4	89.0	5.9	54.4	2 748.3
September	807.3	1 409.9	83.7	5.6	54.3	817.0	1 418.0	73.0	4.9	54.2	2 751.4
PERSONS											
September 2001	2 248.6	3 054.7	208.5	6.4	62.4	2 256.6	3 053.7	207.1	6.4	62.3	5 232.7
September 2002	2 262.8	3 100.3	196.1	5.9	62.3	2 263.0	3 087.7	201.5	6.1	62.1	5 294.6
2003											
September	2 295.8	3 149.2	192.0	5.7	62.4	2 292.7	3 146.1	190.5	5.7	62.3	5 352.1
October	2 304.7	3 157.9	188.0	5.6	62.5	2 305.7	3 166.2	188.8	5.6	62.6	5 357.5
November	2 312.4	3 166.7	184.7	5.5	62.5	2 320.5	3 174.1	184.0	5.5	62.6	5 362.9
December	2 318.4	3 175.1	182.4	5.4	62.5	2 309.4	3 169.0	180.9	5.4	62.4	5 368.3
2004											
January	2 321.5	3 182.2	181.4	5.4	62.6	2 328.3	3 180.3	183.4	5.5	62.6	5 373.2
February	2 322.0	3 188.3	181.3	5.4	62.7	2 314.9	3 177.7	181.0	5.4	62.5	5 378.2
March	2 319.9	3 192.2	182.3	5.4	62.7	2 326.4	3 199.7	178.5	5.3	62.8	5 383.2
April	2 315.9	3 192.3	183.8	5.4	62.7	2 325.9	3 205.9	185.0	5.5	62.9	5 387.2
May	2 312.4	3 189.4	185.1	5.5	62.6	2 301.4	3 187.5	187.1	5.5	62.6	5 391.2
June	2 310.2	3 184.7	185.5	5.5	62.4	2 309.1	3 186.3	184.2	5.5	62.5	5 395.2
July	2 310.1	3 180.3	185.0	5.5	62.3	2 304.2	3 178.6	188.7	5.6	62.3	5 401.6
August	2 311.8	3 177.2	183.8	5.5	62.2	2 304.9	3 149.5	188.1	5.6	61.7	5 408.1
September	2 313.9	3 174.5	182.3	5.4	62.0	2 333.2	3 199.1	172.6	5.1	62.3	5 414.5

	TREND					SEASONALLY ADJUSTED					Civilian population aged 15 and over
	Employed full time	Total employed	Total unemp-loyed	Unemp-loyment rate	Partici-pation rate	Employed full time	Total employed	Total unemp-loyed	Unemp-loyment rate	Partici-pation rate	
	'000	'000	'000	%	%	'000	'000	'000	%	%	
MALES											
September 2001	1 092.7	1 273.5	91.0	6.7	72.7	1 095.0	1 274.5	89.6	6.6	72.7	1 875.8
September 2002	1 089.0	1 276.3	82.9	6.1	71.4	1 091.3	1 274.9	81.1	6.0	71.2	1 903.2
2003											
September	1 109.0	1 309.5	73.2	5.3	71.5	1 113.3	1 317.9	72.2	5.2	71.9	1 933.5
October	1 109.5	1 312.9	71.9	5.2	71.5	1 114.7	1 313.2	71.6	5.2	71.5	1 936.6
November	1 110.2	1 315.0	72.0	5.2	71.5	1 104.6	1 311.4	68.3	4.9	71.1	1 939.6
December	1 112.2	1 316.6	73.3	5.3	71.6	1 104.7	1 318.0	73.7	5.3	71.6	1 942.7
2004											
January	1 115.6	1 318.5	75.3	5.4	71.6	1 116.5	1 315.5	79.0	5.7	71.7	1 945.5
February	1 120.1	1 321.0	77.4	5.5	71.8	1 123.7	1 321.3	78.0	5.6	71.8	1 948.2
March	1 124.8	1 324.0	78.9	5.6	71.9	1 124.5	1 321.4	75.9	5.4	71.6	1 951.0
April	1 129.0	1 326.8	80.1	5.7	72.0	1 134.4	1 334.5	82.5	5.8	72.5	1 953.3
May	1 131.8	1 329.2	80.9	5.7	72.1	1 127.9	1 326.7	81.0	5.8	72.0	1 955.7
June	1 133.7	1 331.3	81.9	5.8	72.2	1 132.4	1 328.9	82.0	5.8	72.1	1 958.0
July	1 135.4	1 333.1	83.1	5.9	72.2	1 135.6	1 333.5	81.3	5.7	72.1	1 961.0
August	1 136.8	1 334.7	84.3	5.9	72.3	1 141.8	1 336.0	83.4	5.9	72.3	1 964.1
September	1 137.9	1 336.1	85.4	6.0	72.3	1 134.3	1 336.6	88.1	6.2	72.4	1 967.1
FEMALES											
September 2001	558.1	1 009.7	69.6	6.4	54.6	565.1	1 009.7	63.7	5.9	54.4	1 975.0
September 2002	570.6	1 045.6	63.1	5.7	55.4	572.4	1 043.1	64.1	5.8	55.3	2 001.6
2003											
September	556.8	1 045.6	65.9	5.9	54.7	556.2	1 047.8	62.5	5.6	54.6	2 032.0
October	560.2	1 047.3	65.8	5.9	54.7	556.4	1 046.3	69.1	6.2	54.8	2 035.0
November	564.6	1 051.0	65.9	5.9	54.8	569.7	1 054.9	65.0	5.8	55.0	2 037.8
December	568.6	1 055.7	66.0	5.9	55.0	568.3	1 054.0	68.0	6.1	55.0	2 040.8
2004											
January	572.5	1 060.2	65.5	5.8	55.1	574.2	1 059.8	62.0	5.5	54.9	2 043.6
February	576.6	1 063.9	64.2	5.7	55.1	578.0	1 062.8	67.6	6.0	55.2	2 046.4
March	580.6	1 066.6	62.8	5.6	55.1	575.6	1 068.6	62.7	5.5	55.2	2 049.2
April	584.1	1 068.6	62.2	5.5	55.1	579.6	1 073.8	65.4	5.7	55.5	2 051.5
May	586.6	1 070.0	62.7	5.5	55.2	591.0	1 066.6	55.6	5.0	54.6	2 053.8
June	587.7	1 071.2	64.2	5.7	55.2	599.3	1 068.1	61.8	5.5	55.0	2 056.1
July	587.5	1 072.5	66.3	5.8	55.3	581.1	1 074.5	67.5	5.9	55.5	2 059.1
August	586.4	1 073.9	68.4	6.0	55.4	587.8	1 072.7	74.4	6.5	55.6	2 062.1
September	584.9	1 075.1	70.7	6.2	55.5	577.5	1 078.0	70.0	6.1	55.6	2 065.1
PERSONS											
September 2001	1 650.8	2 283.2	160.5	6.6	63.4	1 660.1	2 284.2	153.4	6.3	63.3	3 850.8
September 2002	1 659.6	2 321.9	146.0	5.9	63.2	1 663.8	2 318.0	145.1	5.9	63.1	3 904.8
2003											
September	1 665.8	2 355.1	139.1	5.6	62.9	1 669.5	2 365.7	134.8	5.4	63.1	3 965.5
October	1 669.7	2 360.2	137.7	5.5	62.9	1 671.1	2 359.5	140.7	5.6	63.0	3 971.5
November	1 674.8	2 366.0	138.0	5.5	63.0	1 674.3	2 366.3	133.3	5.3	62.8	3 977.5
December	1 680.7	2 372.3	139.3	5.5	63.1	1 673.0	2 371.9	141.7	5.6	63.1	3 983.5
2004											
January	1 688.2	2 378.7	140.8	5.6	63.2	1 690.7	2 375.3	141.0	5.6	63.1	3 989.0
February	1 696.7	2 384.9	141.6	5.6	63.2	1 701.7	2 384.1	145.5	5.8	63.3	3 994.6
March	1 705.5	2 390.6	141.8	5.6	63.3	1 700.1	2 390.0	138.6	5.5	63.2	4 000.2
April	1 713.1	2 395.5	142.3	5.6	63.4	1 714.0	2 408.3	147.9	5.8	63.8	4 004.8
May	1 718.4	2 399.3	143.7	5.6	63.4	1 719.0	2 393.3	136.6	5.4	63.1	4 009.5
June	1 721.4	2 402.5	146.1	5.7	63.5	1 731.7	2 397.1	143.8	5.7	63.3	4 014.2
July	1 722.9	2 405.7	149.3	5.8	63.6	1 716.7	2 408.0	148.8	5.8	63.6	4 020.2
August	1 723.2	2 408.7	152.7	6.0	63.6	1 729.7	2 408.7	157.8	6.1	63.7	4 026.2
September	1 722.7	2 411.2	156.1	6.1	63.7	1 711.8	2 414.6	158.1	6.1	63.8	4 032.2

	TREND					SEASONALLY ADJUSTED					Civilian population aged 15 and over
	Employed full time	Total employed	Total unemp- loyed	Unemp- loyment rate	Partici- pation rate	Employed full time	Total employed	Total unemp- loyed	Unemp- loyment rate	Partici- pation rate	
	'000	'000	'000	%	%	'000	'000	'000	%	%	
MALES											
September 2001	802.1	939.1	88.2	8.6	73.0	805.9	938.8	88.9	8.7	73.0	1 408.2
September 2002	829.4	981.0	71.2	6.8	72.7	826.3	977.6	72.3	6.9	72.5	1 447.9
2003											
September	852.9	1 002.5	67.1	6.3	71.9	853.0	1 003.0	66.7	6.2	72.0	1 486.5
October	860.3	1 008.4	65.4	6.1	72.1	857.5	1 009.1	70.1	6.5	72.4	1 489.7
November	868.1	1 014.2	64.0	5.9	72.2	865.2	1 014.7	58.8	5.5	71.9	1 492.9
December	875.3	1 019.6	63.1	5.8	72.4	881.4	1 021.8	61.0	5.6	72.4	1 496.0
2004											
January	881.0	1 024.6	62.8	5.8	72.5	884.4	1 024.0	61.2	5.6	72.4	1 499.3
February	885.5	1 029.0	62.8	5.8	72.7	883.5	1 028.6	68.0	6.2	73.0	1 502.6
March	888.8	1 032.8	63.0	5.7	72.8	886.0	1 026.7	63.9	5.9	72.4	1 505.9
April	891.2	1 036.0	62.8	5.7	72.8	893.4	1 044.7	61.5	5.6	73.3	1 509.0
May	893.6	1 039.3	62.1	5.6	72.8	893.6	1 041.5	59.1	5.4	72.8	1 512.3
June	896.4	1 042.9	61.0	5.5	72.8	893.0	1 037.6	62.8	5.7	72.6	1 515.5
July	899.3	1 046.7	59.8	5.4	72.8	903.2	1 043.7	62.5	5.7	72.8	1 519.0
August	902.0	1 050.7	58.7	5.3	72.9	899.3	1 048.9	58.1	5.3	72.7	1 522.7
September	904.1	1 054.4	57.8	5.2	72.9	906.7	1 063.1	55.2	4.9	73.3	1 526.3
FEMALES											
September 2001	411.1	762.6	66.3	8.0	57.0	413.4	760.7	64.5	7.8	56.8	1 453.3
September 2002	424.8	783.6	67.6	7.9	57.2	422.6	787.4	67.4	7.9	57.4	1 488.3
2003											
September	441.4	822.9	58.9	6.7	57.7	448.1	821.2	60.3	6.8	57.7	1 528.6
October	443.1	825.2	58.2	6.6	57.7	438.4	827.9	52.5	6.0	57.5	1 532.0
November	444.3	826.4	58.2	6.6	57.6	442.7	829.3	58.6	6.6	57.8	1 535.5
December	444.8	826.3	58.7	6.6	57.5	449.0	828.1	59.1	6.7	57.6	1 538.9
2004											
January	444.7	825.4	59.2	6.7	57.4	448.3	825.8	61.5	6.9	57.5	1 542.0
February	444.7	825.0	59.3	6.7	57.2	440.2	820.3	59.5	6.8	56.9	1 545.2
March	445.7	826.1	58.6	6.6	57.1	443.5	824.8	59.3	6.7	57.1	1 548.4
April	448.3	829.2	57.1	6.4	57.1	451.0	828.5	56.9	6.4	57.1	1 551.4
May	452.8	834.1	55.5	6.2	57.2	448.9	832.6	54.2	6.1	57.1	1 554.4
June	458.7	839.6	54.1	6.1	57.4	456.5	844.1	54.5	6.1	57.7	1 557.4
July	464.9	844.9	53.1	5.9	57.5	467.5	842.7	52.6	5.9	57.4	1 560.7
August	470.8	849.7	52.3	5.8	57.7	471.7	849.8	52.0	5.8	57.7	1 564.0
September	475.7	853.6	51.8	5.7	57.8	479.7	856.6	52.6	5.8	58.0	1 567.3
PERSONS											
September 2001	1 213.3	1 701.7	154.5	8.3	64.9	1 219.3	1 699.5	153.4	8.3	64.8	2 861.5
September 2002	1 254.3	1 764.6	138.8	7.3	64.8	1 248.9	1 765.0	139.8	7.3	64.9	2 936.2
2003											
September	1 294.3	1 825.3	126.0	6.5	64.7	1 301.2	1 824.2	127.0	6.5	64.7	3 015.1
October	1 303.4	1 833.6	123.6	6.3	64.8	1 295.9	1 837.0	122.6	6.3	64.9	3 021.6
November	1 312.4	1 840.5	122.2	6.2	64.8	1 307.9	1 844.1	117.4	6.0	64.8	3 028.3
December	1 320.1	1 845.9	121.8	6.2	64.8	1 330.4	1 849.9	120.1	6.1	64.9	3 034.9
2004											
January	1 325.7	1 850.0	122.0	6.2	64.8	1 332.7	1 849.8	122.7	6.2	64.9	3 041.3
February	1 330.3	1 854.0	122.1	6.2	64.8	1 323.7	1 848.9	127.5	6.5	64.8	3 047.9
March	1 334.5	1 858.8	121.6	6.1	64.8	1 329.5	1 851.5	123.2	6.2	64.7	3 054.3
April	1 339.5	1 865.3	120.0	6.0	64.9	1 344.4	1 873.2	118.4	5.9	65.1	3 060.4
May	1 346.4	1 873.4	117.6	5.9	64.9	1 342.5	1 874.1	113.3	5.7	64.8	3 066.7
June	1 355.1	1 882.5	115.1	5.8	65.0	1 349.5	1 881.6	117.3	5.9	65.1	3 072.9
July	1 364.2	1 891.6	113.0	5.6	65.1	1 370.7	1 886.3	115.1	5.8	65.0	3 079.7
August	1 372.8	1 900.4	111.0	5.5	65.2	1 371.0	1 898.7	110.1	5.5	65.1	3 086.8
September	1 379.8	1 908.0	109.6	5.4	65.3	1 386.4	1 919.6	107.8	5.3	65.5	3 093.6

	TREND					SEASONALLY ADJUSTED					Civilian population aged 15 and over
	Employed full time	Total employed	Total unemployed	Unemployment rate	Participation rate	Employed full time	Total employed	Total unemployed	Unemployment rate	Participation rate	
	'000	'000	'000	%	%	'000	'000	'000	%	%	
MALES											
September 2001	319.3	376.2	33.8	8.2	68.7	319.0	376.9	33.4	8.1	68.7	597.1
September 2002	326.7	386.5	27.9	6.7	68.9	328.5	392.2	27.8	6.6	69.8	601.8
2003											
September	336.7	396.7	26.6	6.3	69.7	335.4	396.2	25.6	6.1	69.4	607.6
October	335.2	396.5	26.9	6.3	69.6	335.2	394.4	27.3	6.5	69.3	608.2
November	334.4	396.3	27.3	6.4	69.6	334.7	396.5	27.7	6.5	69.7	608.7
December	334.2	396.3	27.8	6.5	69.6	335.4	398.0	28.7	6.7	70.0	609.3
2004											
January	334.5	396.4	28.1	6.6	69.6	332.2	397.2	27.6	6.5	69.7	609.7
February	335.1	396.7	28.2	6.6	69.6	332.5	394.4	28.2	6.7	69.2	610.2
March	335.6	397.1	28.2	6.6	69.6	340.6	397.8	27.6	6.5	69.7	610.7
April	335.9	397.6	28.1	6.6	69.7	335.5	397.2	28.8	6.8	69.7	611.2
May	335.7	398.2	28.1	6.6	69.7	334.7	397.3	27.9	6.6	69.5	611.7
June	335.1	398.7	28.0	6.6	69.7	336.3	400.7	28.1	6.6	70.0	612.2
July	334.3	399.1	28.0	6.6	69.7	333.4	399.5	27.7	6.5	69.7	612.7
August	333.6	399.2	27.9	6.5	69.7	333.3	398.5	28.0	6.6	69.6	613.2
September	332.7	399.1	27.8	6.5	69.6	332.8	398.5	27.7	6.5	69.5	613.7
FEMALES											
September 2001	155.6	305.4	20.6	6.3	52.3	155.3	303.3	21.1	6.5	52.1	623.1
September 2002	152.3	311.2	20.7	6.2	52.9	151.2	311.2	22.3	6.7	53.2	627.1
2003											
September	162.5	321.2	21.6	6.3	54.2	164.9	322.1	22.5	6.5	54.5	632.0
October	160.3	320.0	22.1	6.5	54.1	160.3	320.8	21.3	6.2	54.1	632.6
November	157.9	319.2	22.5	6.6	54.0	157.7	317.3	22.0	6.5	53.6	633.1
December	155.9	319.0	22.5	6.6	53.9	156.0	319.0	22.3	6.5	53.9	633.6
2004											
January	154.6	319.2	22.1	6.5	53.8	153.6	318.9	23.0	6.7	53.9	634.0
February	154.4	319.7	21.4	6.3	53.8	151.5	318.6	24.1	7.0	54.0	634.4
March	155.1	320.2	20.7	6.1	53.7	156.3	322.2	18.4	5.4	53.7	634.7
April	156.7	320.6	20.2	5.9	53.7	158.9	321.9	18.5	5.4	53.6	635.2
May	158.3	320.9	19.8	5.8	53.6	155.5	320.2	19.5	5.7	53.4	635.6
June	159.7	321.2	19.8	5.8	53.6	161.8	319.2	20.8	6.1	53.4	636.0
July	160.7	321.5	19.7	5.8	53.6	160.9	321.6	21.0	6.1	53.8	636.4
August	161.5	321.9	19.7	5.8	53.6	162.1	323.4	19.4	5.7	53.8	636.9
September	161.8	322.1	19.8	5.8	53.7	160.8	322.3	18.6	5.5	53.5	637.3
PERSONS											
September 2001	474.8	681.7	54.4	7.4	60.3	474.3	680.2	54.5	7.4	60.2	1 220.2
September 2002	479.0	697.7	48.6	6.5	60.7	479.7	703.4	50.2	6.7	61.3	1 228.9
2003											
September	499.1	717.9	48.2	6.3	61.8	500.3	718.3	48.1	6.3	61.8	1 239.6
October	495.5	716.5	48.9	6.4	61.7	495.5	715.1	48.6	6.4	61.6	1 240.7
November	492.3	715.6	49.8	6.5	61.6	492.4	713.8	49.7	6.5	61.5	1 241.8
December	490.1	715.3	50.2	6.6	61.6	491.4	717.0	51.1	6.6	61.8	1 242.9
2004											
January	489.1	715.6	50.2	6.6	61.6	485.9	716.2	50.6	6.6	61.7	1 243.7
February	489.5	716.3	49.6	6.5	61.5	483.9	713.0	52.3	6.8	61.5	1 244.6
March	490.8	717.3	48.9	6.4	61.5	496.9	720.0	46.0	6.0	61.5	1 245.4
April	492.5	718.2	48.3	6.3	61.5	494.4	719.1	47.3	6.2	61.5	1 246.3
May	494.0	719.1	47.9	6.2	61.5	490.2	717.5	47.5	6.2	61.3	1 247.3
June	494.8	719.9	47.8	6.2	61.5	498.1	719.9	48.9	6.4	61.6	1 248.2
July	495.0	720.6	47.7	6.2	61.5	494.2	721.1	48.7	6.3	61.6	1 249.1
August	495.1	721.1	47.6	6.2	61.5	495.4	721.9	47.5	6.2	61.5	1 250.0
September	494.5	721.3	47.6	6.2	61.5	493.5	720.8	46.3	6.0	61.3	1 251.0

	TREND					SEASONALLY ADJUSTED					Civilian population aged 15 and over '000
	Employed full time	Total employed	Total unemployed	Unemployment rate	Participation rate	Employed full time	Total employed	Total unemployed	Unemployment rate	Participation rate	
	'000	'000	'000	%	%	'000	'000	'000	%	%	
MALES											
September 2001	447.2	519.9	40.6	7.2	75.1	445.2	517.9	39.6	7.1	74.8	745.8
September 2002	445.6	531.1	38.2	6.7	75.0	447.2	530.6	39.5	6.9	75.2	758.5
2003											
September	468.1	545.4	34.1	5.9	74.9	469.0	544.5	36.4	6.3	75.1	773.8
October	469.7	546.9	33.7	5.8	74.9	469.6	544.1	34.1	5.9	74.6	775.2
November	470.5	548.6	32.9	5.7	74.9	473.4	549.1	33.1	5.7	75.0	776.6
December	470.6	550.5	31.9	5.5	74.9	473.4	555.6	30.7	5.2	75.4	778.0
2004											
January	470.4	552.3	30.9	5.3	74.8	467.8	551.7	31.2	5.4	74.8	779.2
February	470.2	553.5	29.9	5.1	74.8	465.9	550.6	29.2	5.0	74.3	780.5
March	470.4	553.9	29.2	5.0	74.6	469.0	551.3	30.1	5.2	74.4	781.7
April	470.8	553.5	28.6	4.9	74.3	476.7	557.3	28.0	4.8	74.7	783.1
May	471.1	552.5	28.0	4.8	74.0	471.0	557.3	28.5	4.9	74.7	784.4
June	471.0	551.5	27.3	4.7	73.6	469.7	548.6	27.1	4.7	73.3	785.8
July	470.4	550.3	26.5	4.6	73.3	470.5	547.3	26.3	4.6	72.8	787.5
August	469.7	549.4	25.9	4.5	72.9	469.2	547.5	26.7	4.7	72.8	789.1
September	468.9	548.6	25.2	4.4	72.6	468.5	551.9	24.1	4.2	72.8	790.8
FEMALES											
September 2001	206.2	407.8	28.2	6.5	57.6	207.8	405.7	28.8	6.6	57.4	756.8
September 2002	208.5	417.7	23.7	5.4	57.4	209.3	420.1	23.4	5.3	57.6	769.4
2003											
September	215.3	416.8	28.9	6.5	56.8	212.8	409.4	27.1	6.2	55.6	785.1
October	215.5	416.8	29.2	6.5	56.7	218.5	420.0	28.5	6.4	57.0	786.6
November	215.6	417.6	29.2	6.5	56.7	218.4	419.0	29.6	6.6	56.9	788.1
December	215.6	419.3	29.0	6.5	56.8	215.4	419.3	30.7	6.8	57.0	789.5
2004											
January	215.8	422.1	28.5	6.3	57.0	216.4	422.7	27.5	6.1	56.9	790.8
February	216.8	425.5	27.7	6.1	57.2	211.6	420.5	28.5	6.3	56.7	792.1
March	218.5	428.8	26.8	5.9	57.4	216.4	427.9	26.7	5.9	57.3	793.3
April	220.6	431.4	26.0	5.7	57.6	223.2	434.7	25.0	5.4	57.8	794.7
May	222.4	433.0	25.4	5.5	57.6	225.7	439.8	24.6	5.3	58.3	796.1
June	223.4	433.4	25.1	5.5	57.5	226.4	431.8	26.1	5.7	57.4	797.4
July	223.8	433.2	24.9	5.4	57.3	221.2	430.1	25.6	5.6	57.0	799.0
August	223.9	432.7	24.8	5.4	57.2	220.2	430.8	22.8	5.0	56.7	800.6
September	223.5	431.9	24.8	5.4	57.0	225.1	433.3	26.1	5.7	57.3	802.3
PERSONS											
September 2001	653.4	927.6	68.8	6.9	66.3	653.0	923.6	68.4	6.9	66.0	1 502.7
September 2002	654.1	948.7	61.9	6.1	66.1	656.5	950.6	62.9	6.2	66.3	1 527.9
2003											
September	683.4	962.2	62.9	6.1	65.8	681.8	953.9	63.5	6.2	65.3	1 558.8
October	685.2	963.7	62.8	6.1	65.7	688.1	964.1	62.6	6.1	65.7	1 561.7
November	686.1	966.2	62.2	6.0	65.7	691.8	968.0	62.7	6.1	65.9	1 564.6
December	686.2	969.9	60.9	5.9	65.8	688.8	974.9	61.4	5.9	66.1	1 567.5
2004											
January	686.2	974.4	59.3	5.7	65.8	684.3	974.4	58.7	5.7	65.8	1 570.0
February	687.1	979.0	57.7	5.6	65.9	677.5	971.1	57.7	5.6	65.4	1 572.5
March	688.9	982.8	56.0	5.4	65.9	685.4	979.2	56.7	5.5	65.8	1 575.0
April	691.4	984.9	54.6	5.2	65.9	699.8	992.0	53.0	5.1	66.2	1 577.7
May	693.5	985.6	53.4	5.1	65.7	696.7	997.0	53.1	5.1	66.4	1 580.5
June	694.4	984.9	52.4	5.0	65.5	696.2	980.4	53.3	5.2	65.3	1 583.2
July	694.2	983.5	51.5	5.0	65.2	691.7	977.4	52.0	5.0	64.9	1 586.5
August	693.6	982.1	50.7	4.9	65.0	689.4	978.2	49.5	4.8	64.6	1 589.8
September	692.4	980.5	50.0	4.9	64.8	693.5	985.2	50.2	4.8	65.0	1 593.1

	TREND					SEASONALLY ADJUSTED					Civilian population aged 15 and over
	Employed full time	Total employed	Total unemp-loyed	Unemp-loyment rate	Partici-pation rate	Employed full time	Total employed	Total unemp-loyed	Unemp-loyment rate	Partici-pation rate	
	'000	'000	'000	%	%	'000	'000	'000	%	%	
MALES											
September 2001	93.9	109.3	12.9	10.5	67.2	95.6	109.7	13.2	10.8	67.6	181.9
September 2002	94.5	110.4	11.2	9.2	66.3	95.1	110.8	11.8	9.6	66.9	183.3
2003											
September	97.4	113.6	9.8	7.9	66.4	97.4	113.5	9.8	7.9	66.3	185.8
October	97.6	113.8	9.7	7.9	66.4	97.3	114.2	10.2	8.2	66.9	186.1
November	97.9	114.1	9.7	7.8	66.4	98.1	113.8	10.4	8.4	66.7	186.3
December	98.2	114.6	9.6	7.7	66.5	97.2	113.7	8.7	7.1	65.6	186.6
2004											
January	98.6	115.3	9.4	7.5	66.7	99.5	115.3	9.2	7.4	66.6	186.9
February	99.1	116.1	9.2	7.4	67.0	99.0	116.1	9.3	7.4	67.0	187.1
March	99.8	116.8	9.2	7.3	67.2	99.4	117.6	9.5	7.5	67.8	187.4
April	100.4	117.2	9.3	7.3	67.4	100.2	117.4	9.3	7.3	67.6	187.6
May	100.8	117.4	9.4	7.4	67.5	100.7	117.1	8.6	6.8	66.9	187.8
June	101.0	117.5	9.4	7.4	67.5	101.7	117.3	10.1	7.9	67.7	188.1
July	101.0	117.5	9.4	7.4	67.4	102.5	117.8	9.6	7.6	67.7	188.3
August	100.8	117.5	9.4	7.4	67.3	100.0	117.2	9.5	7.5	67.2	188.5
September	100.5	117.4	9.3	7.4	67.2	99.1	117.5	8.9	7.0	67.0	188.7
FEMALES											
September 2001	44.3	89.2	7.4	7.6	50.5	46.1	90.4	7.6	7.7	51.2	191.3
September 2002	43.2	89.0	7.9	8.2	50.3	44.2	88.3	8.1	8.4	50.1	192.6
2003											
September	47.7	94.7	6.1	6.1	51.7	48.0	95.2	5.8	5.8	51.8	195.2
October	47.7	95.1	6.1	6.0	51.8	47.6	95.8	5.9	5.8	52.0	195.5
November	47.4	95.4	6.1	6.0	51.8	46.9	95.1	6.2	6.1	51.7	195.7
December	46.9	95.3	6.1	6.1	51.8	47.7	94.7	6.6	6.5	51.7	196.0
2004											
January	46.3	95.2	6.2	6.1	51.7	47.0	95.9	5.7	5.6	51.8	196.2
February	46.0	95.0	6.2	6.1	51.5	44.6	94.4	6.6	6.5	51.4	196.4
March	46.0	95.0	6.2	6.1	51.4	45.9	95.7	6.0	5.9	51.7	196.7
April	46.4	95.1	6.1	6.1	51.4	46.4	95.1	5.9	5.8	51.3	196.9
May	46.9	95.4	6.1	6.0	51.5	45.7	94.1	6.5	6.5	51.1	197.1
June	47.4	95.8	6.0	5.9	51.6	48.7	95.8	5.8	5.7	51.5	197.3
July	47.7	96.2	6.0	5.8	51.7	49.1	97.1	6.2	6.0	52.3	197.6
August	47.8	96.6	5.9	5.8	51.8	47.2	96.9	5.3	5.2	51.7	197.8
September	47.8	96.9	5.9	5.7	51.9	46.7	96.8	6.2	6.0	52.0	198.0
PERSONS											
September 2001	138.2	198.5	20.2	9.2	58.6	141.7	200.1	20.8	9.4	59.2	373.2
September 2002	137.7	199.4	19.1	8.7	58.1	139.4	199.2	19.9	9.1	58.3	375.9
2003											
September	145.1	208.4	15.9	7.1	58.9	145.3	208.6	15.6	7.0	58.9	381.0
October	145.3	209.0	15.8	7.0	58.9	144.9	210.0	16.1	7.1	59.3	381.5
November	145.2	209.5	15.8	7.0	59.0	145.0	208.8	16.6	7.4	59.0	382.1
December	145.1	210.0	15.7	7.0	59.0	144.9	208.4	15.4	6.9	58.5	382.6
2004											
January	144.9	210.4	15.6	6.9	59.0	146.5	211.2	14.9	6.6	59.0	383.0
February	145.1	211.1	15.4	6.8	59.1	143.6	210.5	15.9	7.0	59.0	383.5
March	145.8	211.7	15.4	6.8	59.1	145.2	213.3	15.5	6.8	59.6	384.0
April	146.8	212.3	15.4	6.8	59.2	146.6	212.5	15.2	6.7	59.2	384.5
May	147.7	212.8	15.4	6.8	59.3	146.4	211.2	15.1	6.7	58.8	384.9
June	148.4	213.2	15.4	6.7	59.3	150.4	213.1	15.9	6.9	59.4	385.4
July	148.7	213.7	15.4	6.7	59.4	151.5	214.9	15.8	6.9	59.8	385.8
August	148.6	214.1	15.3	6.7	59.4	147.2	214.1	14.8	6.5	59.3	386.3
September	148.3	214.4	15.2	6.6	59.4	145.8	214.3	15.1	6.6	59.3	386.7

	TREND					Civilian population aged 15 and over
	<i>Employed full time</i>	<i>Total employed</i>	<i>Total unemployed</i>	<i>Unemployment rate</i>	<i>Participation rate</i>	
	'000	'000	'000	%	%	
MALES						
September 2001	44.1	54.1	4.5	7.6	79.9	73.5
September 2002	44.7	54.4	3.0	5.2	78.0	73.6
2003						
September	43.5	53.6	2.8	4.9	76.3	74.0
October	43.4	53.7	2.7	4.8	76.3	73.9
November	43.4	53.8	2.6	4.6	76.5	73.8
December	43.6	53.9	2.5	4.5	76.6	73.7
2004						
January	43.8	53.9	2.4	4.3	76.5	73.7
February	44.0	53.8	2.4	4.3	76.3	73.7
March	44.0	53.4	2.6	4.6	75.9	73.7
April	43.8	52.8	2.9	5.2	75.5	73.8
May	43.5	52.2	3.3	6.0	75.1	73.9
June	43.2	51.5	3.8	6.9	74.8	73.9
July	42.8	50.9	4.2	7.7	74.5	74.1
August	42.5	50.4	4.7	8.5	74.2	74.2
September	42.3	50.0	5.0	9.1	74.1	74.3
FEMALES						
September 2001	28.9	43.4	3.8	8.1	68.4	69.1
September 2002	30.5	44.6	2.1	4.4	67.5	69.2
2003						
September	28.2	41.2	2.7	6.2	63.3	69.3
October	28.3	41.7	2.6	5.9	63.9	69.3
November	28.5	42.4	2.5	5.5	64.7	69.4
December	28.7	43.1	2.4	5.2	65.5	69.4
2004						
January	28.9	43.7	2.3	5.0	66.2	69.5
February	29.2	44.0	2.2	4.8	66.6	69.5
March	29.5	44.2	2.3	4.9	66.9	69.6
April	29.6	44.3	2.4	5.2	67.1	69.6
May	29.7	44.2	2.6	5.5	67.1	69.7
June	29.6	44.1	2.7	5.8	67.1	69.8
July	29.4	43.9	2.9	6.2	67.1	69.8
August	29.2	43.8	3.1	6.6	67.0	69.9
September	28.9	43.5	3.2	6.9	66.8	70.0
PERSONS						
September 2001	73.0	97.5	8.3	7.8	74.3	142.6
September 2002	75.2	99.0	5.0	4.8	72.9	142.8
2003						
September	71.7	94.7	5.5	5.5	70.0	143.3
October	71.7	95.4	5.3	5.3	70.3	143.2
November	71.9	96.2	5.1	5.0	70.8	143.2
December	72.3	97.0	4.9	4.8	71.2	143.1
2004						
January	72.8	97.6	4.7	4.6	71.5	143.2
February	73.2	97.8	4.7	4.6	71.6	143.2
March	73.4	97.6	4.9	4.7	71.5	143.3
April	73.4	97.1	5.3	5.2	71.4	143.4
May	73.2	96.4	5.9	5.7	71.2	143.6
June	72.7	95.6	6.5	6.4	71.0	143.7
July	72.2	94.8	7.2	7.0	70.9	143.9
August	71.7	94.2	7.7	7.6	70.7	144.1
September	71.2	93.5	8.2	8.1	70.6	144.3

	TREND					<i>Civilian population aged 15 and over</i>
	<i>Employed full time</i>	<i>Total employed</i>	<i>Total unemployed</i>	<i>Unemployment rate</i>	<i>Participation rate</i>	
	'000	'000	'000	%	%	
MALES						
September 2001	73.5	88.0	5.4	5.8	77.5	120.4
September 2002	78.4	91.4	4.7	4.9	78.6	122.1
2003						
September	75.0	90.9	4.0	4.2	76.7	123.7
October	75.2	91.3	3.9	4.1	76.9	123.8
November	75.4	91.7	3.9	4.1	77.1	124.0
December	75.5	92.1	3.9	4.1	77.4	124.1
2004						
January	75.7	92.4	4.0	4.1	77.6	124.2
February	75.9	92.7	4.0	4.1	77.8	124.2
March	76.2	92.9	3.9	4.0	77.8	124.3
April	76.5	92.8	3.7	3.9	77.6	124.3
May	76.7	92.5	3.6	3.8	77.3	124.4
June	76.9	91.9	3.7	3.8	76.8	124.4
July	77.1	91.3	3.8	4.0	76.3	124.5
August	77.2	90.6	4.0	4.2	75.9	124.7
September	77.2	90.0	4.2	4.4	75.5	124.8
FEMALES						
September 2001	51.7	81.7	3.2	3.8	65.8	129.0
September 2002	54.7	85.5	3.3	3.8	68.2	130.4
2003						
September	52.4	83.5	3.7	4.2	66.2	131.6
October	52.4	83.9	3.6	4.1	66.4	131.8
November	52.6	84.2	3.4	3.9	66.4	131.9
December	52.9	84.5	3.2	3.7	66.4	132.1
2004						
January	53.2	84.6	3.1	3.5	66.4	132.1
February	53.4	84.7	3.0	3.4	66.4	132.1
March	53.3	84.6	2.9	3.4	66.3	132.1
April	53.0	84.6	2.9	3.4	66.3	132.0
May	52.7	84.5	3.0	3.4	66.2	132.0
June	52.6	84.4	3.0	3.4	66.2	131.9
July	52.6	84.3	3.0	3.5	66.2	132.0
August	52.8	84.3	3.1	3.5	66.2	132.1
September	52.9	84.3	3.1	3.6	66.2	132.2
PERSONS						
September 2001	125.1	169.6	8.7	4.9	71.4	249.4
September 2002	133.0	176.9	8.0	4.3	73.2	252.4
2003						
September	127.4	174.5	7.6	4.2	71.3	255.3
October	127.6	175.2	7.5	4.1	71.5	255.6
November	128.0	175.9	7.3	4.0	71.6	255.9
December	128.4	176.6	7.2	3.9	71.7	256.2
2004						
January	128.9	177.1	7.0	3.8	71.9	256.3
February	129.3	177.4	6.9	3.8	71.9	256.3
March	129.4	177.5	6.8	3.7	71.9	256.4
April	129.4	177.4	6.6	3.6	71.8	256.4
May	129.4	176.9	6.6	3.6	71.6	256.4
June	129.5	176.3	6.7	3.6	71.3	256.3
July	129.7	175.6	6.8	3.7	71.1	256.6
August	129.9	175.0	7.0	3.9	70.9	256.8
September	130.2	174.3	7.3	4.0	70.7	257.0

	EMPLOYED			UNEMPLOYED			UNEMPLOYMENT RATE			Participation rate	
	Full time	Part time	Total	Looking for f/t work	Total	Labour force	Not in labour force	Civilian population aged 15 and over	Looking for f/t work		Total
	'000	'000	'000	'000	'000	'000	'000	'000	%		%
MALES											
New South Wales	1 536.0	255.4	1 791.4	78.9	99.9	1 891.3	771.8	2 663.2	4.9	5.3	71.0
Victoria	1 132.4	207.3	1 339.7	72.8	91.1	1 430.8	536.3	1 967.1	6.0	6.4	72.7
Queensland	915.0	154.4	1 069.5	40.3	53.3	1 122.7	403.5	1 526.3	4.2	4.7	73.6
South Australia	333.1	65.4	398.5	20.7	26.7	425.2	188.5	613.7	5.9	6.3	69.3
Western Australia	467.7	81.6	549.4	20.3	26.0	575.4	215.5	790.8	4.2	4.5	72.8
Tasmania	99.0	18.6	117.5	8.0	9.0	126.6	62.1	188.7	7.5	7.1	67.1
Northern Territory	42.8	8.2	51.1	3.3	5.0	56.1	18.2	74.3	7.2	9.0	75.5
Australian Capital Territory	77.7	13.0	90.8	3.3	4.7	95.5	29.3	124.8	4.1	4.9	76.5
Australia	4 603.8	804.0	5 407.8	247.6	315.8	5 723.6	2 225.3	7 948.9	5.1	5.5	72.0
FEMALES											
New South Wales	830.6	611.0	1 441.6	44.1	73.9	1 515.5	1 235.9	2 751.4	5.0	4.9	55.1
Victoria	585.9	508.6	1 094.5	42.4	72.5	1 167.1	898.1	2 065.1	6.7	6.2	56.5
Queensland	492.0	375.8	867.8	30.1	50.2	918.0	649.3	1 567.3	5.8	5.5	58.6
South Australia	165.0	160.7	325.7	10.3	18.4	344.2	293.1	637.3	5.9	5.4	54.0
Western Australia	229.0	210.8	439.8	14.5	25.2	465.1	337.2	802.3	6.0	5.4	58.0
Tasmania	47.7	48.9	96.7	3.9	6.9	103.6	94.5	198.0	7.6	6.7	52.3
Northern Territory	28.3	15.3	43.6	2.5	3.5	47.1	22.9	70.0	8.2	7.4	67.3
Australian Capital Territory	53.1	32.4	85.5	1.9	3.1	88.5	43.7	132.2	3.4	3.4	67.0
Australia	2 431.6	1 963.5	4 395.1	149.8	253.8	4 648.9	3 574.7	8 223.6	5.8	5.5	56.5
PERSONS											
New South Wales	2 366.6	866.4	3 233.0	123.0	173.8	3 406.8	2 007.7	5 414.5	4.9	5.1	62.9
Victoria	1 718.3	716.0	2 434.3	115.1	163.6	2 597.9	1 434.4	4 032.2	6.3	6.3	64.4
Queensland	1 407.0	530.2	1 937.2	70.4	103.5	2 040.7	1 052.9	3 093.6	4.8	5.1	66.0
South Australia	498.1	226.2	724.2	31.0	45.1	769.4	481.6	1 251.0	5.9	5.9	61.5
Western Australia	696.8	292.4	989.2	34.8	51.3	1 040.4	552.7	1 593.1	4.8	4.9	65.3
Tasmania	146.7	67.5	214.2	12.0	16.0	230.1	156.6	386.7	7.5	6.9	59.5
Northern Territory	71.1	23.5	94.6	5.9	8.6	103.2	41.1	144.3	7.6	8.3	71.5
Australian Capital Territory	130.8	45.4	176.2	5.2	7.8	184.0	73.0	257.0	3.8	4.2	71.6
Australia	7 035.4	2 767.5	9 802.9	397.3	569.6	10 372.5	5 800.0	16 172.4	5.3	5.5	64.1

	EMPLOYED		UNEMPLOYED		UNEMPLOYMENT RATE		Participation rate	Employment to population ratio	Unemployment to population ratio — looking for full-time work
	Full time	Total	Looking for f/t work	Total	Looking for f/t work	Total			
	'000	'000	'000	'000	%	%			
MALES									
September 2001	142.5	337.3	45.5	79.8	24.2	19.1	60.6	49.0	6.6
September 2002	139.3	335.5	35.6	70.9	20.3	17.5	58.6	48.4	5.1
2003									
September	146.8	338.4	35.7	68.6	19.6	16.9	57.9	48.2	5.1
October	149.9	343.8	35.0	67.0	18.9	16.3	58.4	48.9	5.0
November	153.0	349.0	34.5	66.0	18.4	15.9	58.9	49.5	4.9
December	155.2	352.9	34.4	65.5	18.1	15.7	59.3	50.0	4.9
2004									
January	156.0	355.1	34.7	65.8	18.2	15.6	59.6	50.3	4.9
February	155.5	356.2	35.5	66.5	18.6	15.7	59.8	50.4	5.0
March	154.0	356.6	36.2	67.1	19.0	15.8	59.9	50.4	5.1
April	152.0	356.0	36.5	67.6	19.4	16.0	59.8	50.3	5.2
May	150.1	354.7	36.4	67.9	19.5	16.1	59.6	50.0	5.1
June	148.6	352.9	36.2	68.3	19.6	16.2	59.4	49.7	5.1
July	147.6	350.9	36.1	69.0	19.7	16.4	59.2	49.4	5.1
August	147.0	348.9	36.2	69.9	19.8	16.7	58.9	49.1	5.1
September	146.5	346.7	36.4	70.7	19.9	16.9	58.7	48.8	5.1
FEMALES									
September 2001	84.5	333.5	31.4	68.3	27.1	17.0	60.7	50.4	4.7
September 2002	77.9	337.1	27.3	65.9	25.9	16.3	60.5	50.7	4.1
2003									
September	83.3	347.0	26.2	61.0	23.9	15.0	60.5	51.4	3.9
October	82.2	347.1	26.7	62.2	24.5	15.2	60.6	51.4	3.9
November	81.2	347.7	27.3	63.1	25.2	15.4	60.7	51.4	4.0
December	81.3	349.2	28.1	63.7	25.7	15.4	60.9	51.5	4.1
2004									
January	82.6	351.9	28.9	63.9	25.9	15.4	61.3	51.9	4.3
February	84.5	355.2	29.7	63.8	26.0	15.2	61.7	52.3	4.4
March	86.2	358.2	30.3	63.9	26.0	15.1	62.1	52.7	4.5
April	87.3	360.0	30.3	64.1	25.8	15.1	62.3	52.9	4.5
May	87.6	359.9	30.0	64.9	25.5	15.3	62.4	52.8	4.4
June	87.3	358.1	29.4	66.0	25.2	15.6	62.2	52.5	4.3
July	86.8	355.7	28.7	67.1	24.9	15.9	62.0	52.1	4.2
August	86.7	353.2	28.1	68.1	24.5	16.2	61.7	51.7	4.1
September	86.3	350.7	27.5	69.0	24.2	16.4	61.5	51.4	4.0
PERSONS									
September 2001	227.1	670.8	76.9	148.1	25.3	18.1	60.7	49.7	5.7
September 2002	217.2	672.6	62.9	136.8	22.4	16.9	59.5	49.5	4.6
2003									
September	230.1	685.4	61.9	129.6	21.2	15.9	59.2	49.8	4.5
October	232.1	690.9	61.7	129.2	21.0	15.8	59.5	50.1	4.5
November	234.2	696.7	61.8	129.1	20.9	15.6	59.8	50.4	4.5
December	236.5	702.1	62.5	129.2	20.9	15.5	60.1	50.7	4.5
2004									
January	238.6	707.0	63.7	129.7	21.1	15.5	60.4	51.0	4.6
February	240.0	711.5	65.2	130.3	21.4	15.5	60.7	51.3	4.7
March	240.2	714.9	66.5	131.0	21.7	15.5	61.0	51.5	4.8
April	239.3	716.0	66.8	131.7	21.8	15.5	61.0	51.6	4.8
May	237.7	714.6	66.4	132.7	21.8	15.7	61.0	51.4	4.8
June	235.9	711.1	65.6	134.3	21.8	15.9	60.8	51.1	4.7
July	234.5	706.6	64.9	136.1	21.7	16.2	60.5	50.8	4.7
August	233.7	702.1	64.3	138.0	21.6	16.4	60.3	50.4	4.6
September	232.8	697.4	63.8	139.7	21.5	16.7	60.1	50.0	4.6

	EMPLOYED		UNEMPLOYED		UNEMPLOYMENT RATE		Participation rate	Employment to population ratio	Unemployment to population ratio — looking for full-time work
	Full time	Total	Looking for f/t work	Total	Looking for f/t work	Total			
	'000	'000	'000	'000	%	%			
MALES									
September 2001	141.3	336.0	46.0	79.2	24.6	19.1	60.4	48.9	6.7
September 2002	139.5	335.1	32.3	68.9	18.8	17.1	58.3	48.3	4.7
2003									
September	146.4	337.7	36.9	70.0	20.1	17.2	58.1	48.1	5.2
October	152.6	345.0	36.4	69.8	19.2	16.8	59.0	49.0	5.2
November	153.8	348.9	30.9	60.3	16.8	14.7	58.1	49.5	4.4
December	153.0	354.7	33.9	64.9	18.1	15.5	59.4	50.3	4.8
2004									
January	158.7	357.5	34.8	67.5	18.0	15.9	60.2	50.6	4.9
February	154.8	352.3	36.2	65.7	19.0	15.7	59.1	49.9	5.1
March	155.1	358.7	37.6	70.2	19.5	16.4	60.6	50.7	5.3
April	154.4	354.4	35.5	66.8	18.7	15.9	59.5	50.1	5.0
May	146.4	354.7	37.5	66.4	20.4	15.8	59.4	50.0	5.3
June	145.7	355.5	36.3	70.2	19.9	16.5	60.0	50.1	5.1
July	150.1	353.3	35.1	65.5	19.0	15.6	59.0	49.8	4.9
August	147.7	343.6	34.6	70.7	19.0	17.1	58.3	48.4	4.9
September	146.7	346.4	38.8	73.4	20.9	17.5	59.0	48.7	5.5
FEMALES									
September 2001	84.6	330.5	31.3	67.0	27.0	16.9	60.1	50.0	4.7
September 2002	76.7	339.4	27.7	66.3	26.6	16.3	61.0	51.0	4.2
2003									
September	83.6	343.7	26.9	60.0	24.4	14.9	59.9	51.0	4.0
October	79.4	350.2	24.7	60.9	23.8	14.8	60.9	51.8	3.7
November	83.5	351.1	27.1	63.4	24.5	15.3	61.2	51.9	4.0
December	82.5	346.7	28.1	64.0	25.4	15.6	60.6	51.1	4.1
2004									
January	82.5	348.7	28.8	64.8	25.9	15.7	60.9	51.4	4.2
February	77.4	351.3	30.5	65.0	28.2	15.6	61.3	51.7	4.5
March	84.3	359.7	30.4	62.8	26.5	14.9	62.2	52.9	4.5
April	99.6	368.4	30.4	62.4	23.4	14.5	63.3	54.1	4.5
May	87.8	359.6	30.3	65.0	25.6	15.3	62.4	52.8	4.4
June	84.8	358.9	28.9	64.9	25.4	15.3	62.2	52.6	4.2
July	81.1	353.9	29.8	68.7	26.9	16.3	62.0	51.9	4.4
August	86.4	349.2	27.2	69.9	23.9	16.7	61.4	51.2	4.0
September	91.0	352.0	27.0	67.4	22.8	16.1	61.4	51.5	3.9
PERSONS									
September 2001	225.9	666.5	77.3	146.3	25.5	18.0	60.2	49.4	5.7
September 2002	216.2	674.5	60.0	135.3	21.7	16.7	59.6	49.6	4.4
2003									
September	229.9	681.3	63.8	130.0	21.7	16.0	58.9	49.5	4.6
October	232.0	695.2	61.1	130.7	20.8	15.8	59.9	50.4	4.4
November	237.2	700.0	58.1	123.7	19.7	15.0	59.6	50.7	4.2
December	235.4	701.4	62.0	128.9	20.8	15.5	60.0	50.7	4.5
2004									
January	241.2	706.2	63.6	132.3	20.9	15.8	60.5	51.0	4.6
February	232.2	703.6	66.7	130.7	22.3	15.7	60.2	50.8	4.8
March	239.4	718.4	68.0	133.0	22.1	15.6	61.4	51.8	4.9
April	254.0	722.7	65.9	129.2	20.6	15.2	61.4	52.1	4.7
May	234.2	714.3	67.8	131.5	22.4	15.5	60.9	51.4	4.9
June	230.5	714.3	65.2	135.2	22.0	15.9	61.1	51.3	4.7
July	231.2	707.1	64.9	134.3	21.9	16.0	60.4	50.8	4.7
August	234.1	692.8	61.7	140.6	20.9	16.9	59.8	49.7	4.4
September	237.7	698.3	65.7	140.7	21.7	16.8	60.2	50.1	4.7

	EMPLOYED			UNEMPLOYED			UNEMPLOYMENT RATE			Unemployment to population ratio — looking for full-time work		
	Full time	Part time	Total	Looking for f/t work	Total	Labour force	Not in labour force	Civilian population aged 15-19	Looking for f/t work	Total	Participation rate	Unemployment ratio — looking for full-time work
	'000	'000	'000	'000	'000	'000	'000	'000	%	%	%	%
NOT ATTENDING FULL-TIME EDUCATION												
Males												
September 2001	134.1	37.3	171.4	38.0	39.8	211.2	17.3	228.5	22.1	18.8	92.4	16.6
September 2002	132.9	38.0	170.9	23.6	24.4	195.3	19.1	214.5	15.1	12.5	91.1	11.0
September 2003	138.2	33.6	171.8	29.8	31.7	203.5	20.8	224.4	17.7	15.6	90.7	13.3
September 2004	134.4	35.8	170.1	30.8	34.0	204.1	20.2	224.3	18.7	16.6	91.0	13.7
Females												
September 2001	78.2	43.5	121.7	23.7	27.6	149.3	25.0	174.3	23.2	18.5	85.7	13.6
September 2002	71.0	49.8	120.8	18.6	20.7	141.5	26.2	167.8	20.8	14.6	84.4	11.1
September 2003	77.0	47.9	124.9	20.7	22.4	147.3	24.7	172.1	21.2	15.2	85.6	12.0
September 2004	82.5	50.2	132.7	18.9	19.7	152.4	27.2	179.6	18.6	12.9	84.8	10.5
Persons												
September 2001	212.4	80.8	293.1	61.7	67.4	360.5	42.3	402.8	22.5	18.7	89.5	15.3
September 2002	203.9	87.8	291.7	42.2	45.1	336.8	45.4	382.2	17.2	13.4	88.1	11.1
September 2003	215.3	81.5	296.8	50.5	54.1	350.9	45.6	396.4	19.0	15.4	88.5	12.7
September 2004	216.8	86.0	302.8	49.7	53.7	356.5	47.4	403.9	18.6	15.1	88.3	12.3
ATTENDING FULL-TIME EDUCATION												
Males												
September 2001	*2.8	163.7	166.6	4.7	38.0	204.6	254.6	459.2	62.2	18.6	44.6	1.0
September 2002	*1.7	163.3	165.0	6.7	43.3	208.3	270.6	478.9	79.7	20.8	43.5	1.4
September 2003	*2.5	163.5	166.0	5.2	37.1	203.1	274.8	477.9	67.6	18.3	42.5	1.1
September 2004	6.6	169.7	176.2	6.2	38.2	214.5	272.2	486.7	48.7	17.8	44.1	1.3
Females												
September 2001	*2.4	201.7	204.2	*4.1	38.2	242.4	244.9	487.3	*62.4	15.8	49.8	*0.8
September 2002	*2.2	211.3	213.4	5.9	43.9	257.3	240.5	497.8	73.1	17.1	51.7	1.2
September 2003	*2.8	210.9	213.7	*3.1	35.7	249.4	252.9	502.3	*52.7	14.3	49.7	*0.6
September 2004	4.4	209.8	214.2	5.0	45.6	259.8	243.5	503.3	53.3	17.6	51.6	1.0
Persons												
September 2001	5.3	365.5	370.8	8.7	76.3	447.1	499.4	946.5	62.3	17.1	47.2	0.9
September 2002	*3.9	374.6	378.4	12.6	87.2	465.6	511.1	976.7	76.5	18.7	47.7	1.3
September 2003	5.3	374.5	379.7	8.3	72.9	452.6	527.7	980.2	61.2	16.1	46.2	0.8
September 2004	10.9	379.4	390.4	11.2	83.9	474.2	515.7	990.0	50.6	17.7	47.9	1.1
TOTAL												
Males												
September 2001	137.0	201.0	338.0	42.7	77.9	415.9	271.9	687.7	23.8	18.7	60.5	6.2
September 2002	134.6	201.3	335.9	30.3	67.7	403.6	289.8	693.4	18.4	16.8	58.2	4.4
September 2003	140.7	197.1	337.9	35.0	68.8	406.7	295.6	702.3	19.9	16.9	57.9	5.0
September 2004	140.9	205.4	346.3	37.0	72.2	418.5	292.5	711.0	20.8	17.3	58.9	5.2
Females												
September 2001	80.7	245.2	325.9	27.7	65.9	391.7	269.9	661.6	25.6	16.8	59.2	4.2
September 2002	73.2	261.1	334.3	24.6	64.6	398.8	266.7	665.6	25.1	16.2	59.9	3.7
September 2003	79.8	258.8	338.6	23.8	58.2	396.8	277.6	674.4	23.0	14.7	58.8	3.5
September 2004	86.9	260.0	346.8	23.9	65.4	412.2	270.7	682.9	21.6	15.9	60.4	3.5
Persons												
September 2001	217.7	446.2	663.9	70.4	143.7	807.6	541.7	1 349.3	24.4	17.8	59.9	5.2
September 2002	207.8	462.3	670.2	54.9	132.3	802.5	556.5	1 358.9	20.9	16.5	59.1	4.0
September 2003	220.5	456.0	676.5	58.8	127.0	803.4	573.2	1 376.7	21.0	15.8	58.4	4.3
September 2004	227.8	465.4	693.1	60.9	137.6	830.7	563.2	1 393.9	21.1	16.6	59.6	4.4

* estimate is subject to sampling variability too high for most practical purposes

	EMPLOYED			UNEMPLOYED			UNEMPLOYMENT RATE			Unemployment to population ratio — looking for full-time work		
	Full time	Part time	Total	Looking for f/t work	Total	Labour force	Not in labour force	Civilian population aged 15-19	Looking for f/t work	Total	Participation rate	Unemployment ratio — looking for full-time work
	'000	'000	'000	'000	'000	'000	'000	'000	%	%	%	%
NOT ATTENDING FULL-TIME EDUCATION												
New South Wales	63.2	24.7	87.9	15.6	17.2	105.2	16.8	122.0	19.8	16.4	86.2	12.8
Victoria	39.9	15.2	55.1	11.4	11.7	66.8	8.9	75.7	22.3	17.5	88.3	15.1
Queensland	57.1	24.1	81.2	9.8	10.3	91.6	7.4	99.0	14.6	11.3	92.5	9.9
South Australia	15.0	6.3	21.3	4.0	4.2	25.5	4.3	29.8	21.3	16.5	85.4	13.6
Western Australia	31.2	10.5	41.7	5.1	5.6	47.3	5.2	52.4	14.1	11.8	90.1	9.8
Tasmania	5.7	2.4	8.0	1.4	1.5	9.5	1.4	10.9	20.0	15.7	87.4	13.0
Northern Territory	1.4	1.9	3.3	1.5	2.3	5.6	3.0	8.5	51.5	41.3	65.2	17.2
Australian Capital Territory	3.4	*0.8	4.3	*0.8	*0.8	5.1	*0.4	5.5	*19.7	*16.6	92.5	*15.3
Australia	216.8	86.0	302.8	49.7	53.7	356.5	47.4	403.9	18.6	15.1	88.3	12.3
ATTENDING FULL-TIME EDUCATION												
New South Wales	*4.5	116.4	120.9	*4.5	27.6	148.4	186.5	334.9	*50.0	18.6	44.3	*1.3
Victoria	*1.8	102.8	104.5	*1.5	22.0	126.5	136.8	263.3	*45.4	17.4	48.1	*0.6
Queensland	*2.6	75.0	77.6	*2.7	14.5	92.1	84.2	176.3	*50.7	15.7	52.2	*1.5
South Australia	*0.5	28.6	29.1	*1.1	8.1	37.2	37.0	74.3	*67.1	21.8	50.1	*1.4
Western Australia	*0.8	39.1	39.9	*1.0	7.7	47.6	46.6	94.1	*56.3	16.2	50.5	*1.1
Tasmania	*0.6	7.8	8.3	*0.3	1.8	10.2	13.2	23.4	*37.6	18.1	43.5	*1.5
Northern Territory	*—	2.4	2.4	*—	*0.7	3.2	2.5	5.7	*—	*23.4	56.3	*—
Australian Capital Territory	*0.2	7.4	7.6	*0.1	1.4	9.0	9.0	18.0	*43.6	15.8	50.0	*0.8
Australia	10.9	379.4	390.4	11.2	83.9	474.2	515.7	990.0	50.6	17.7	47.9	1.1
TOTAL												
New South Wales	67.7	141.1	208.8	20.1	44.8	253.6	203.3	456.9	22.9	17.7	55.5	4.4
Victoria	41.6	118.0	159.7	12.9	33.7	193.4	145.6	339.0	23.6	17.4	57.0	3.8
Queensland	59.7	99.1	158.9	12.5	24.8	183.7	91.7	275.3	17.3	13.5	66.7	4.5
South Australia	15.5	34.9	50.4	5.1	12.3	62.7	41.4	104.1	24.8	19.6	60.2	4.9
Western Australia	32.0	49.5	81.5	6.1	13.3	94.8	51.7	146.6	16.1	14.0	64.7	4.2
Tasmania	6.2	10.1	16.4	1.8	3.3	19.7	14.6	34.3	22.0	17.0	57.5	5.1
Northern Territory	1.4	4.3	5.7	1.5	3.0	8.7	5.4	14.2	51.5	34.8	61.6	10.4
Australian Capital Territory	3.6	8.2	11.8	*1.0	2.3	14.1	9.4	23.5	*21.4	16.1	60.0	*4.2
Australia	227.8	465.4	693.1	60.9	137.6	830.7	563.2	1 393.9	21.1	16.6	59.6	4.4

* estimate is subject to sampling variability too high for most practical purposes

— nil or rounded to zero (including null cells)

WHAT IF...? REVISIONS TO TREND ESTIMATES

EFFECT OF NEW SEASONALLY ADJUSTED ESTIMATES ON TREND ESTIMATES

TREND REVISIONS

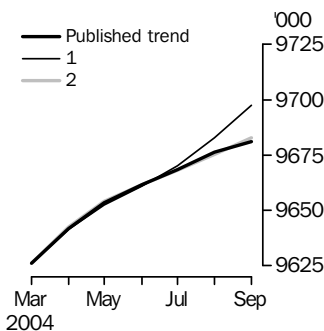
Each time new seasonally adjusted estimates become available, trend estimates are revised. This revision is a combined result of the concurrent seasonal adjustment process and the application of surrogates of the Henderson average to the seasonally adjusted series (see paragraphs 19 to 25 of Explanatory Notes).

The examples in the tables below show two illustrative scenarios and the consequent revisions to previous trend estimates of employment and the unemployment rate. The revisions in the scenarios below are only due to the use of surrogates of the Henderson average, as the impact of revision of the seasonally adjusted estimates can not be estimated in advance.

- (1) The October seasonally adjusted estimate is *higher* than the September estimate by:
 - 0.27% for employment
 - 1.78% for the unemployment rate
- (2) The October seasonally adjusted estimate is *lower* than the September estimate by:
 - 0.27% for employment
 - 1.78% for the unemployment rate

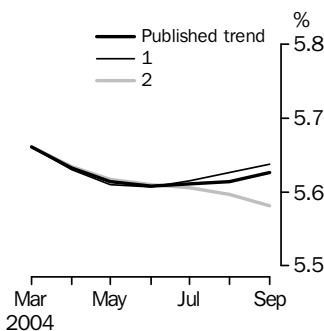
The percentage changes of 0.27% and 1.78% were chosen because they represent the average absolute monthly percentage changes in employment and the unemployment rate respectively.

EMPLOYMENT



	Trend as published	WHAT IF NEXT MONTH'S SEASONALLY ADJUSTED ESTIMATE IS:	
		(1) 9743.5 i.e. rises by 0.27%	(2) 9691.0 i.e. falls by 0.27%
2004			
June	9 661.5	9 660.9	9 661.8
July	9 668.5	9 670.3	9 668.0
August	9 676.2	9 682.9	9 675.1
September	9 681.2	9 697.6	9 682.9

UNEMPLOYMENT RATE



	Trend as published	WHAT IF NEXT MONTH'S SEASONALLY ADJUSTED ESTIMATE IS:	
		(1) 5.7 i.e. rises by 1.78%	(2) 5.5 i.e. falls by 1.78%
2004			
June	5.6	5.6	5.6
July	5.6	5.6	5.6
August	5.6	5.6	5.6
September	5.6	5.6	5.6

EXPLANATORY NOTES

INTRODUCTION

1 This publication contains estimates of the civilian labour force derived from the Labour Force Survey component of the Monthly Population Survey. The full time series for estimates from this publication are also available electronically - see *Labour Force, Australia, Spreadsheets* (cat. no. 6202.0.55.001). More detailed estimates are released one week after this publication in various electronic formats - see *Labour Force, Australia, Detailed - Electronic Delivery* (cat. no. 6291.0.55.001).

CONCEPTS, SOURCES AND METHODS

2 The conceptual framework used in Australia's Labour Force Survey aligns closely with the standards and guidelines set out in Resolutions of International Conferences of Labour Statisticians. Descriptions of the underlying concepts and structure of Australia's labour force statistics, and the sources and methods used in compiling the estimates, are presented in *Labour Statistics: Concepts, Sources and Methods* (cat. no. 6102.0.55.001) which is available on the ABS web site <<http://www.abs.gov.au>> (Methods, Classifications, Concepts & Standards).

MONTHLY POPULATION SURVEY

3 The population survey is based on a multi-stage area sample of private dwellings (currently about 30,000 houses, flats, etc.) and a list sample of non-private dwellings (hotels, motels, etc.), and covers about 0.45% of the population of Australia. The information is obtained from the occupants of selected dwellings by specially trained interviewers. The information obtained relates to the week before the interview (i.e. the reference week).

4 Households selected for the Labour Force Survey are interviewed each month for 8 months, with one eighth of the sample being replaced each month. The first interview is conducted face-to-face. Subsequent interviews are conducted by telephone (if acceptable to the respondent).

5 Information is collected using computer-assisted interviewing (CAI), whereby responses are recorded directly onto an electronic questionnaire on a notebook computer. The CAI method was progressively implemented from October 2003 to August 2004, replacing the 'pen and paper' method previously used.

6 The interviews are generally conducted during the two weeks beginning on the Monday between the 6th and 12th of each month. Each year, to deal with operational difficulties involved with collecting and processing the Labour Force Survey around the Christmas and New Year holiday period, interviews for December start four weeks after November interviews start, and January interviews start five weeks after December interviews start. As a result, January interviewing may commence as early as the 8th or as late as the 14th, depending on the year. Occasionally, circumstances that present significant operational difficulties for survey collection can result in a change to the normal pattern for the start of interviewing.

7 Estimates from the Labour Force Survey are published first in this publication 31 days after the commencement of interviews for that month, with the exception of estimates for each December which are published 38 days after the commencement of interviews.

SCOPE OF SURVEY

8 The Labour Force Survey includes all persons aged 15 years and over except members of the permanent defence forces, certain diplomatic personnel of overseas governments customarily excluded from census and estimated population counts, overseas residents in Australia, and members of non-Australian defence forces (and their dependants) stationed in Australia.

COVERAGE

9 In the Labour Force Survey, coverage rules are applied which aim to ensure that each person is associated with only one dwelling, and hence has only one chance of selection. The coverage rules are necessarily a balance between theoretical and operational considerations. Nevertheless, the chance of a person being enumerated at two separate dwellings in the survey is considered to be negligible.

EXPLANATORY NOTES *continued*

POPULATION BENCHMARKS

10 Labour Force Survey estimates are calculated in such a way as to add up to independent estimates of the civilian population aged 15 and over (population benchmarks). From February 2004, labour force estimates have been compiled using benchmarks based on the results of the 2001 Census of Population and Housing. Revisions were made to historical estimates from January 1999 to January 2004.

COMPARABILITY OF SERIES

11 From April 1986, the definition of employed persons was changed to include persons who worked without pay between 1 and 14 hours per week in a family business or on a farm (i.e. contributing family workers). For further information, see paragraphs 36 and 37 of the Explanatory Notes to the February 1987 issue of *Labour Force, Australia* (cat. no. 6203.0).

12 The ABS introduced telephone interviewing into the Labour Force Survey in August 1996. Implementation was phased in for each new sample group from August 1996 to February 1997. During the period of implementation, the new method produced different estimates than would have been obtained under the old methodology. The effect dissipated over the final months of implementation and was no longer discernible from February 1997. The estimates for February 1997 and onwards are directly comparable to estimates for periods prior to August 1996. For further details, see the feature article in the June 1997 issue of *Labour Force, Australia* (cat. no. 6203.0).

13 From April 2001 the Labour Force Survey has been conducted using a redesigned questionnaire containing additional data items and some minor definitional changes. The definition of unemployed persons was changed to include all persons who were waiting to start work and were available to start in the reference week. This change was introduced in February 2004, when historical unit record data were revised from April 2001 to January 2004. This revision created a small trend break at April 2001 in unemployed persons and unemployment rate series. For further details, see *Information Paper: Forthcoming Changes to Labour Force Statistics* (cat. no. 6292.0).

14 Core labour force series were revised in April 2001 for the period April 1986 to March 2001 for the remaining definitional changes introduced with the redesigned questionnaire, to reduce the impact of the changes on labour force series. For further details, see *Information Paper: Implementing the Redesigned Labour Force Survey Questionnaire* (cat. no. 6295.0) and *Information Paper: Questionnaires Used in the Labour Force Survey* (cat. no. 6232.0).

SURVEY SAMPLE REDESIGN

15 The Labour Force Survey sample was last reselected using information collected in the 2001 Census of Population and Housing.

16 The bulk of the new sample was phased in over the period November 2002 to June 2003, with one eighth of this portion of the sample being introduced every month. The remainder of the sample (about 18% of the total), which covers less settled areas of Australia and non-private dwellings was rotated in full for New South Wales, Victoria, Tasmania, Northern Territory and Australian Capital Territory in November 2002, and for Queensland, South Australia and Western Australia in December 2002. Such a pattern of implementation means that any changes to labour force estimates due to differences between the two samples, or any other influences, were spread over the eight months.

17 For further details, see *Information Paper: Labour Force Survey Sample Design* (cat. no. 6269.0) and *Technical Report: New Labour Force Survey sample selections: analysis of the effect on estimates* in the October 2003 issue of *Australian Labour Market Statistics* (cat. no. 6105.0).

EXPLANATORY NOTES *continued*

RELIABILITY OF ESTIMATES

18 Two types of error are possible in an estimate based on a sample survey: sampling error and non-sampling error.

Sampling error occurs because a sample, rather than the entire population, is surveyed. One measure of the likely difference resulting from not including all dwellings in the survey is given by the standard error. There are about two chances in three that a sample estimate will differ by less than one standard error from the figure that would have been obtained if all dwellings had been included in the survey, and about nineteen chances in twenty that the difference will be less than two standard errors. Standard errors of estimates for the latest month and of estimates of movements since the previous month are shown on pages 27 and 28. Standard errors of other estimates and other movements may be determined by using information in *Information Paper: Labour Force Survey Standard Errors* (cat. no. 6298.0) which is available free on the ABS web site <<http://www.abs.gov.au>> (Papers & Articles).

Non sampling error arises from inaccuracies in collecting, recording and processing the data. Every effort is made to minimise reporting error by the careful design of questionnaires, intensive training and supervision of interviewers, and efficient data processing procedures.

SEASONAL ADJUSTMENT AND TREND ESTIMATION

19 Seasonal adjustment is a means of removing the estimated effects of normal seasonal variation from the series so that the effects of other influences on the series can be more clearly recognised. Seasonal adjustment does not aim to remove the irregular or non-seasonal influences which may be present in any particular month. This means that month-to-month movements of the seasonally adjusted estimates may not be reliable indicators of trend behaviour.

20 The Labour Force Survey uses the concurrent seasonal adjustment method to derive seasonal factors. Concurrent seasonal adjustment uses data up to the current month to estimate seasonal factors for the current and all previous months. This process can result in revisions each month to estimates for earlier periods. However, in most instances, the only noticeable revisions will be to the seasonally adjusted estimates for the previous month and one year prior to the current month.

21 Seasonal adjustment is able to remove the effect of events which occur at the same time in the survey every year. However, there are some events, like holidays, which are not always at the same time in the survey cycle or which are not at the same time across Australia. The effects of these types of events on LFS estimates cannot in all cases be removed, because the pattern of their effects cannot be determined. However, two events which are adjusted for in the seasonally adjusted series are the January interview start date and the timing of Easter.

22 For more information on concurrent seasonal adjustment and survey proximity to holiday periods, see *Information Paper: Forthcoming Changes to Labour Force Statistics* (cat. no. 6292.0).

23 While seasonal factors for the complete time series are estimated each month, they will continue to be reviewed annually at a more detailed level to take into account each additional year's original data. This annual review will not normally result in significant changes to published estimates. The review will be conducted in February each year with the results released in the February issue of this publication.

24 The smoothing of seasonally adjusted series to produce 'trend' series reduces the impact of the irregular component of the seasonally adjusted series. These trend estimates are derived by applying a 13-term Henderson-weighted moving average to all months except the last six. The last six monthly trend estimates are obtained by applying surrogates of the Henderson average to the seasonally adjusted series. Trend estimates are used to analyse the underlying behaviour of a series over time.

EXPLANATORY NOTES *continued*

SEASONAL ADJUSTMENT AND TREND ESTIMATION *continued*

25 While this smoothing technique enables estimates to be produced for the latest month, it does result in revisions in addition to those caused by the revision of seasonally adjusted estimates. Generally, revisions due to the use of surrogates of the Henderson average become smaller, and after 3 months have a negligible impact on the series.

26 Trend estimates are published for the Northern Territory in table 10 and for the Australian Capital Territory in table 11. Unadjusted series for the two territories have shown, historically, a high degree of variability, which can lead to considerable revisions to the seasonally adjusted estimates each month when seasonal factors are estimated. For this reason, seasonally adjusted estimates are not currently published for the two Territories. In addition, caution should be exercised in the interpretation of trend estimates for the two territories, particularly for the three most recent months, where revisions may be relatively large.

27 For further information, see *A Guide to Interpreting Time Series—Monitoring 'Trends': an Overview* (cat. no. 1348.0) or contact the Assistant Director, Time Series Analysis on (02) 6252 6345.

RELATED PUBLICATIONS

28 Users may also wish to refer to *Australian Labour Market Statistics* (cat. no. 6105.0). This publication contains additional tables and a detailed list of related publications. For further information about this publication, please contact the Assistant Director, Labour Market Statistics on (02) 6252 7636.

29 ABS Information about the labour market can be found on the Labour theme page on the ABS web site <<http://www.abs.gov.au>>(Themes), or from ABS Bookshops.

30 Current publications and other products released by the ABS are listed in the *Catalogue of Publications and Products* (cat. no. 1101.0). The Catalogue is available from any ABS office or the ABS web site <<http://www.abs.gov.au>> (AusStats). The ABS also issues a daily Release Advice on the web site (AusStats) which details products to be released in the week ahead.

DATA AVAILABLE ON REQUEST

31 As well as the statistics included in this and related publications, the ABS may have other relevant data available. Inquiries should be made to Michael Johnson on (02) 6252 6525 or to any ABS office.

EFFECTS OF ROUNDING

32 Estimates have been rounded and discrepancies may occur between sums of the component items and totals.

33 Estimates of movement shown in this publication are obtained by taking the difference of unrounded estimates. The movement estimate is then rounded to one decimal place. Therefore where a discrepancy occurs between the reported movement and the difference of the rounded estimates, the reported movement will be more accurate.

SYMBOLS AND OTHER USAGES

34 SYMBOLS AND OTHER USAGES
pts percentage points

STANDARD ERRORS

STANDARD ERRORS

The estimates in this publication are based on information gained from the occupants of a sample survey of dwellings. Because the entire population is not surveyed, the published estimates are subject to sampling error. The most common way of quantifying such sampling error is to calculate the standard error for the published estimate or statistic. For more information, see paragraph 18 of the Explanatory Notes.

LEVEL ESTIMATES

To illustrate, let us say the published level estimate for employed persons aged 15 to 19 is 700,000. The calculated standard error in this case is 9,800. The standard error is then used to interpret the level estimate of 700,000. For instance, the standard error of 9,800 indicates that:

- There are approximately two chances in three that the real value falls within the range 690,200 to 709,800 (700,000 + or - 9,800)
- There are approximately nineteen chances in twenty that the real value falls within the range 680,400 to 719,600 (700,000 + or - 19,600).

The real value in this case is the result we would obtain if we could enumerate the total population.

The following table shows the standard errors for this month's level estimates.

AUSTRALIA												
.....												
		NSW	Vic.	Qld	SA	WA	Tas.	NT	ACT	Males	Females	Persons
Aged 15 and over												
Employed												
Full time	'000	19.0	14.2	11.4	5.1	5.5	1.9	1.2	1.8	21.9	16.3	29.5
Part time	'000	10.8	9.0	7.8	3.7	4.1	1.4	0.8	1.2	10.4	14.9	17.1
Total	'000	23.0	17.2	12.9	5.9	6.1	2.1	1.4	2.1	24.2	21.3	39.6
Unemployed												
Looking for f/t work	'000	4.9	4.1	3.5	1.7	1.9	0.7	0.5	0.5	6.6	5.5	7.9
Looking for p/t work	'000	3.7	3.1	2.5	1.2	1.4	0.5	0.4	0.4	4.1	4.8	5.8
Total	'000	5.5	4.7	4.1	2.0	2.2	0.8	0.6	0.6	7.3	6.7	9.1
Labour force	'000	23.8	17.9	13.1	6.0	6.2	2.2	1.4	2.1	25.2	22.0	41.8
Not in labour force	'000	17.2	12.8	10.2	5.0	5.1	1.9	1.0	1.4	15.7	19.1	25.4
Unemployment rate												
Looking for f/t work	pts	0.2	0.2	0.2	0.3	0.3	0.5	0.6	0.4	0.1	0.2	0.1
Looking for p/t work	pts	0.4	0.4	0.4	0.5	0.5	0.7	1.4	0.8	0.5	0.2	0.2
Total	pts	0.2	0.2	0.2	0.3	0.2	0.4	0.6	0.3	0.1	0.1	0.1
Participation rate	pts	0.4	0.4	0.4	0.5	0.4	0.6	1.0	0.8	0.3	0.3	0.3
Aged 15 - 19												
Employed												
Full time	'000	4.1	2.9	3.2	1.3	1.9	0.6	0.3	0.4	5.4	4.5	6.4
Part time	'000	5.1	4.2	4.0	1.8	2.2	0.7	0.4	0.6	6.2	6.8	8.4
Total	'000	5.9	4.7	4.8	2.1	2.6	0.8	0.5	0.7	7.5	7.5	9.8
Unemployed												
Looking for f/t work	'000	2.6	1.8	1.7	0.8	1.0	0.3	0.3	0.3	3.2	2.6	3.9
Looking for p/t work	'000	2.9	2.3	1.7	0.9	1.0	0.3	0.3	0.3	3.1	3.4	4.3
Total	'000	3.6	2.7	2.2	1.2	1.3	0.4	0.4	0.4	4.2	4.0	5.3
Labour force	'000	6.3	5.0	5.1	2.2	2.8	0.9	0.6	0.7	8.1	8.1	10.6
Not in labour force	'000	5.8	4.5	3.9	1.9	2.2	0.8	0.5	0.6	7.1	6.9	9.1
Unemployment rate												
Looking for f/t work	pts	3.0	3.4	2.3	3.9	2.6	4.2	10.2	5.7	1.8	2.4	1.4
Looking for p/t work	pts	1.7	1.6	1.5	2.2	1.8	2.8	5.1	3.1	1.3	1.1	0.8
Total	pts	1.4	1.4	1.2	1.9	1.4	2.2	4.4	2.5	1.0	1.0	0.6
Participation rate	pts	1.4	1.5	1.9	2.2	1.9	2.6	4.1	3.0	1.1	1.2	0.8
Unemployment to population ratio — looking for f/t work	pts	0.6	0.5	0.6	0.8	0.7	1.0	2.1	1.1	0.5	0.4	0.3

STANDARD ERRORS *continued*

MOVEMENT ESTIMATES

The following example illustrates how to use the standard error to interpret a movement estimate. Let us say that one month the published level estimate for females employed part time in Australia is 1,890,000; the next month the published level estimate is 1,900,000. The calculated standard error for the movement estimate is 10,300. The standard error is then used to interpret the published movement estimate of 10,000. For instance, the standard error of 10,300 indicates that:

- There are approximately two chances in three that the real movement between the two months falls within the range -300 to 20,300 (10,000 + or - 10,300)
- There are approximately nineteen chances in twenty that the real movement falls within the range -10,600 to 30,600 (10,000 + or - 20,600).

The following table shows the standard errors for this month's movement estimates.

		AUSTRALIA										
		NSW	Vic.	Qld	SA	WA	Tas.	NT	ACT	Males	Females	Persons
Aged 15 and over												
Employed												
Full time	'000	10.0	7.6	7.0	3.2	3.9	1.3	1.1	1.0	14.2	11.3	16.6
Part time	'000	7.2	5.7	5.0	2.4	2.9	1.0	0.7	0.7	7.7	10.5	11.9
Total	'000	11.2	8.6	7.9	3.6	4.4	1.4	1.2	1.1	15.1	14.0	18.6
Unemployed												
Looking for f/t work	'000	3.7	3.0	2.5	1.2	1.5	0.5	0.4	0.4	5.0	4.2	6.0
Looking for p/t work	'000	2.7	2.3	1.9	0.9	1.1	0.4	0.3	0.3	3.2	3.7	4.4
Total	'000	4.2	3.4	2.9	1.4	1.7	0.6	0.5	0.4	5.5	5.1	6.8
Labour force	'000	11.4	8.8	8.0	3.7	4.5	1.5	1.2	1.2	15.4	14.3	19.0
Not in labour force	'000	9.7	7.3	6.5	3.1	3.7	1.3	0.9	0.9	11.2	13.1	15.7
Unemployment rate												
Looking for f/t work	pts	0.2	0.2	0.2	0.2	0.2	0.3	0.5	0.3	0.1	0.2	0.1
Looking for p/t work	pts	0.3	0.3	0.3	0.4	0.4	0.5	1.2	0.6	0.4	0.2	0.2
Total	pts	0.1	0.1	0.1	0.2	0.2	0.3	0.5	0.2	0.1	0.1	0.1
Participation rate	pts	0.2	0.2	0.3	0.3	0.3	0.4	0.8	0.5	0.2	0.2	0.1
Aged 15 - 19												
Employed												
Full time	'000	3.0	2.2	2.4	0.9	1.4	0.4	0.3	0.3	4.1	3.5	4.9
Part time	'000	3.9	3.1	2.8	1.3	1.6	0.5	0.4	0.4	4.7	5.1	6.3
Total	'000	4.4	3.4	3.3	1.4	1.9	0.6	0.4	0.5	5.7	5.7	7.3
Unemployed												
Looking for f/t work	'000	2.0	1.4	1.4	0.6	0.8	0.3	0.2	0.2	2.6	2.2	3.1
Looking for p/t work	'000	2.2	1.7	1.4	0.7	0.9	0.3	0.2	0.2	2.5	2.7	3.3
Total	'000	2.6	2.0	1.7	0.9	1.1	0.3	0.3	0.3	3.2	3.1	4.1
Labour force	'000	4.7	3.6	3.5	1.5	2.0	0.6	0.5	0.5	6.1	6.0	7.7
Not in labour force	'000	4.5	3.4	2.8	1.4	1.7	0.6	0.4	0.4	5.5	5.3	6.9
Unemployment rate												
Looking for f/t work	pts	2.3	2.6	1.9	3.2	2.3	3.6	8.5	4.6	1.4	2.0	1.1
Looking for p/t work	pts	1.3	1.3	1.2	1.7	1.5	2.2	4.2	2.4	1.1	0.9	0.6
Total	pts	1.0	1.0	1.0	1.4	1.1	1.7	3.7	2.0	0.8	0.8	0.5
Participation rate	pts	1.0	1.1	1.3	1.5	1.4	1.8	3.4	2.1	0.9	0.9	0.6
Unemployment to population ratio — looking for f/t work												
	pts	0.4	0.4	0.5	0.6	0.6	0.8	1.7	0.9	0.4	0.3	0.2

GLOSSARY

Actively looking for work	Includes writing, telephoning or applying in person to an employer for work; answering an advertisement for a job; checking factory noticeboards or the touchscreens at the Centrelink offices; being registered with Centrelink as a jobseeker; checking or registering with any other employment agency; advertising or tendering for work; and contacting friends or relatives.
Attending full-time education	Persons aged 15 to 24 years enrolled at secondary or high school or enrolled as a full time student at a Technical and Further Education (TAFE) college, university, or other educational institution in the reference week.
Attending school	Persons aged 15 to 19 years enrolled at secondary or high school in the reference week.
Attending tertiary educational institution full time	Persons aged 15 to 24 years enrolled full time at a TAFE college, university, or other educational institution in the reference week, except those persons aged 15 to 19 years who were still attending school.
Civilian population aged 15 years and over	All usual residents of Australia aged 15 years and over except members of the permanent defence forces, certain diplomatic personnel of overseas governments customarily excluded from census and estimated population counts, overseas residents in Australia, and members of non-Australian defence forces (and their dependants) stationed in Australia.
Employed	<p>All persons aged 15 years and over who, during the reference week:</p> <ul style="list-style-type: none"> ■ worked for one hour or more for pay, profit, commission or payment in kind in a job or business, or on a farm (comprising employees, employers and own account workers); or ■ worked for one hour or more without pay in a family business or on a farm (i.e. contributing family workers); or ■ were employees who had a job but were not at work and were: <ul style="list-style-type: none"> ■ away from work for less than four weeks up to the end of the reference week; or ■ away from work for more than four weeks up to the end of the reference week and received pay for some or all of the four week period to the end of the reference week; or ■ away from work as a standard work or shift arrangement; or ■ on strike or locked out; or ■ on workers' compensation and expected to return to their job; or ■ were employers or own account workers, who had a job, business or farm, but were not at work.
Employment to population ratio	For any group, the number of employed persons expressed as a percentage of the civilian population in the same group.
Full-time workers	Employed persons who usually worked 35 hours or more a week (in all jobs) and those who, although usually working less than 35 hours a week, worked 35 hours or more during the reference week.
Labour force	For any group, persons who were employed or unemployed, as defined.
Labour force status	A classification of the civilian population aged 15 years and over into employed, unemployed or not in the labour force, as defined. The definitions conform closely to the international standard definitions adopted by the International Conferences of Labour Statisticians.
Not in labour force	Persons who were not in the categories employed or unemployed as defined.
Participation rate	For any group, the labour force expressed as a percentage of the civilian population aged 15 years and over in the same group.
Part-time workers	Employed persons who usually worked less than 35 hours a week (in all jobs) and either did so during the reference week, or were not at work in the reference week.

GLOSSARY *continued*

Seasonally adjusted series	A time series of estimates with the estimated effects of normal seasonal variation removed. See Explanatory Notes 19 to 23 for more detail.
Trend series	A smoothed seasonally adjusted series of estimates. See Explanatory Notes 24 to 26 for more detail.
Unemployed	Persons aged 15 years and over who were not employed during the reference week, and: <ul style="list-style-type: none">■ had actively looked for full-time or part-time work at any time in the four weeks up to the end of the reference week and were available for work in the reference week; or■ were waiting to start a new job within four weeks from the end of the reference week and could have started in the reference week if the job had been available then.
Unemployed looking for full-time work	Unemployed persons who: <ul style="list-style-type: none">■ actively looked for full-time work; or■ were waiting to start a new full-time job.
Unemployed looking for part-time work	Unemployed persons who: <ul style="list-style-type: none">■ actively looked for part-time work only; or■ were waiting to start a new part-time job.
Unemployment rate	For any group, the number of unemployed persons expressed as a percentage of the labour force in the same group.
Unemployment to population ratio	For any group, the number of unemployed persons expressed as a percentage of the civilian population in the same group.

FOR MORE INFORMATION . . .

- INTERNET* **www.abs.gov.au** the ABS web site is the best place to start for access to summary data from our latest publications, information about the ABS, advice about upcoming releases, our catalogue, and Australia Now—a statistical profile.
- LIBRARY* A range of ABS publications is available from public and tertiary libraries Australia-wide. Contact your nearest library to determine whether it has the ABS statistics you require, or visit our web site for a list of libraries.
- CPI INFOLINE* For current and historical Consumer Price Index data, call 1902 981 074 (call cost 77c per minute).
- DIAL-A-STATISTIC* For the latest figures for National Accounts, Balance of Payments, Labour Force, Average Weekly Earnings, Estimated Resident Population and the Consumer Price Index call 1900 986 400 (call cost 77c per minute).

INFORMATION SERVICE

Data already published that can be provided within five minutes will be free of charge. Our information consultants can also help you to access the full range of ABS information—ABS user pays services can be tailored to your needs, time frame and budget. Publications may be purchased. Specialists are on hand to help you with analytical or methodological advice.

- PHONE* 1300 135 070
- EMAIL* client.services@abs.gov.au
- FAX* 1300 135 211
- POST* Client Services, ABS, GPO Box 796, Sydney NSW 2001

WHY NOT SUBSCRIBE?

ABS subscription services provide regular, convenient and prompt deliveries of selected ABS publications and products as they are released. Email delivery of monthly and quarterly publications is available.

- PHONE* 1300 366 323
- EMAIL* subscriptions@abs.gov.au
- FAX* (03) 9615 7848
- POST* Subscription Services, ABS, GPO Box 2796Y, Melbourne Vic 3001



2620200009047

ISSN 1448 2819

RRP \$22.00